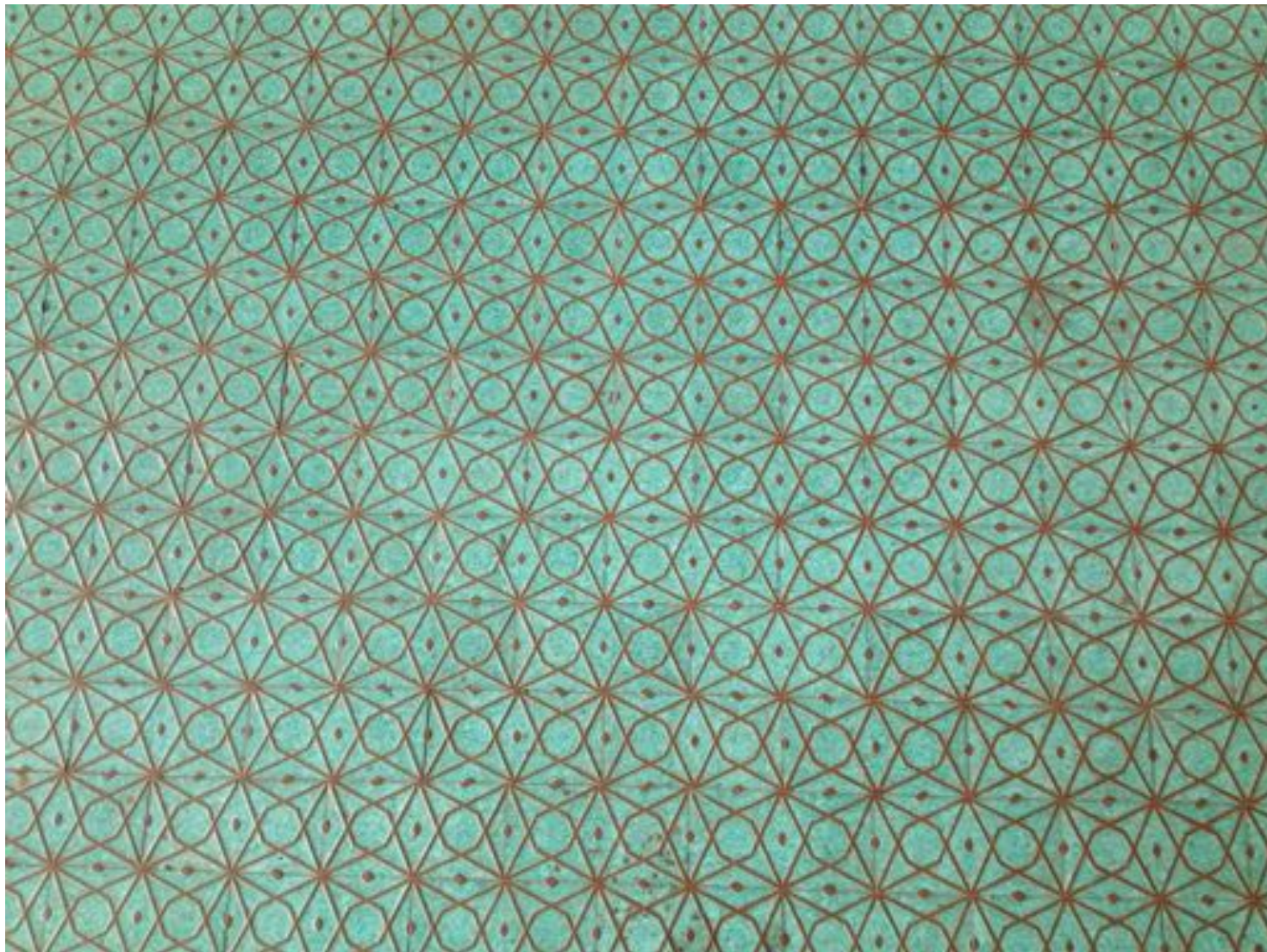


lo spazio del possibile:
della pratica dello spostare leggermente
lo sguardo

DiARC Laboratorio di sintesi finale in architettura degli interni
prof. Arch. Nicola Flora
Tutor:
L.Maisto, E. Mastrangelo, C. Terranova, F. Iarruso, V. Cirillo
Napoli 23 maggio 2016



GIO' PONTI _ Centrale Idroelettrica di Isola_
Comune di Madesimo



GIO' PONTI _ Centrale Idroelettrica di Isola_
Comune di Madesimo

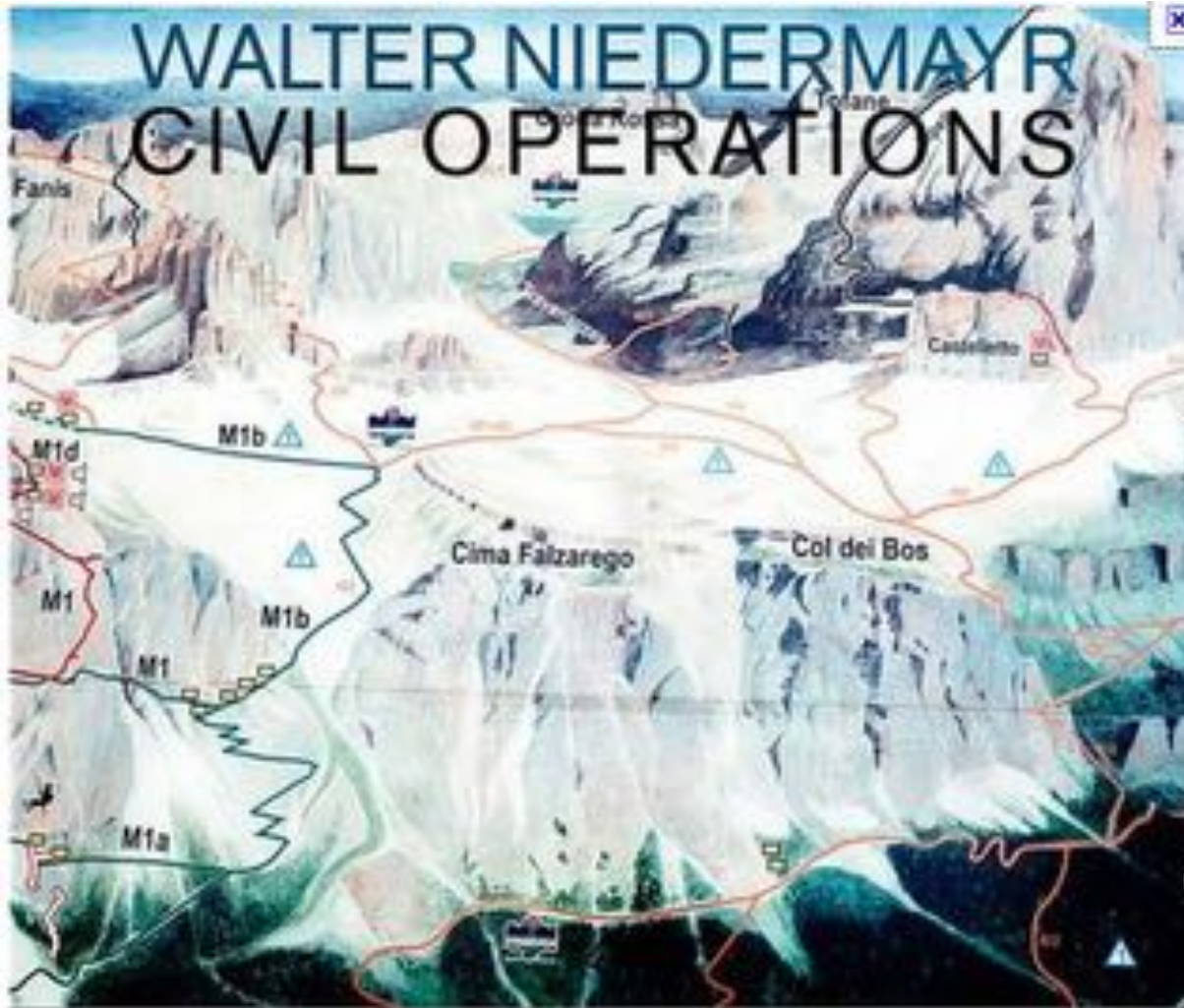


GIO' PONTI _ Centrale Idroelettrica di Prestone_
Comune di Campodolcino





Armin Linke_alpi



walter niedermayr



GRANDE MOTTE XVIII, 2008
Three Type "C" Prints, ed. 1/6
122 7/8 x 51 5/8 inches
312 x 131 cm



Theodulgletscher II, 2005, C-print, 2 x 130 x 104 cm, installed 130 x 210 cm, Ed of 6

walter niedermayr



walter niedermayr



antony gormley



antony gormley



antony gormley



antony gormley



antony gormley



Avoriaz

Goos van der Veen_ skiable landscape



Demi-Quartier

Goos van der Veen_ skiable landscape



Goos van der Veen_ skiable landscape



Les Deux Alpes

Goos van der Veen_ skiable landscape



Morzine

Goos van der Veen_ skiable landscape



Les Arcs

Goos van der Veen_ skiable landscape



Dimitris Piklonis

ES arch
enricosaramelliniarchitetto

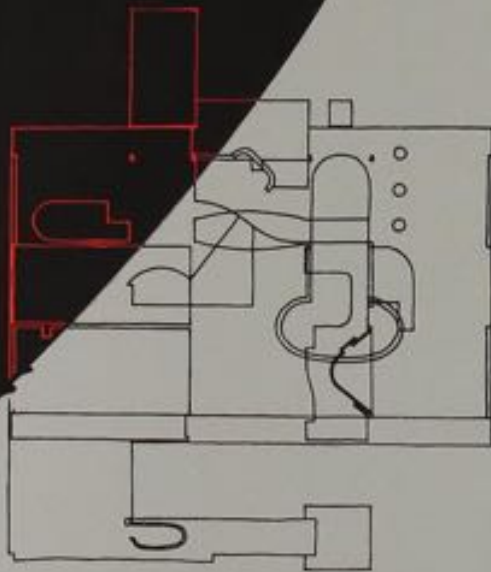


Louis Kahn _fischer house

PIERRE VON MEISS

DALLA FORMA AL LUOGO

Un'introduzione allo studio dell'architettura



HOEPLI

Toyo Ito

Istruzioni per l'uso

Andrew Barrie, Rachaporn Choochuey, Stefano Mirti



postmedia • books

FELIX
ZUMTHOR

PENSARE
ARCHITETTURA

LARS MÜLLER PUBLISHERS



COMPLESSITÀ E CONTRADDIZIONI NELL' ARCHITETTURA

ROBERT VENTURI

edizioni Dedalo

Bruno Zevi
Saper vedere l'architettura



Piccola Biblioteca Einaudi



MARIO CEREGHINI

COSTRUIRE IN MONTAGNA

Architettura e storia



MILIONE

es arch
enricosaramelliniarchitetto

—
ATMOSFE
RA
— MISURA
—
—
—



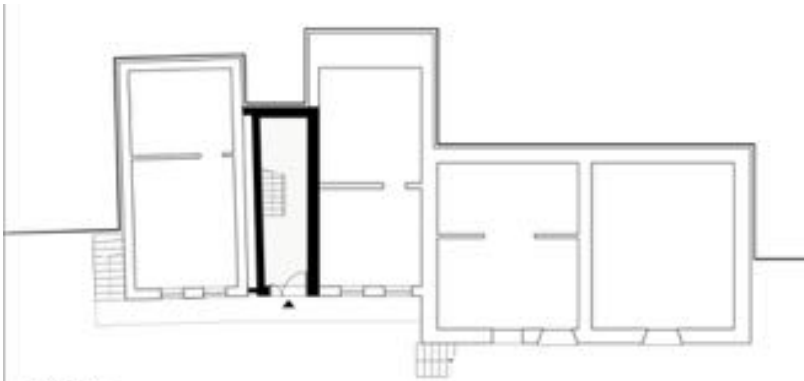


Microrifugio alpino – Wardrobe in the landscape
Madesimo (so)

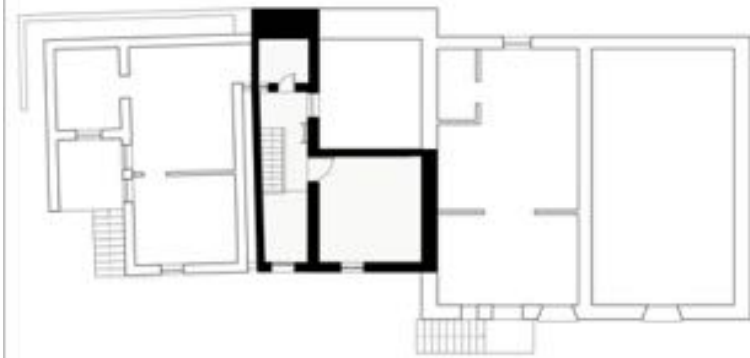


Microrifugio alpino – Wardrobe in the landscape – Madesimo (SO)





piano terra

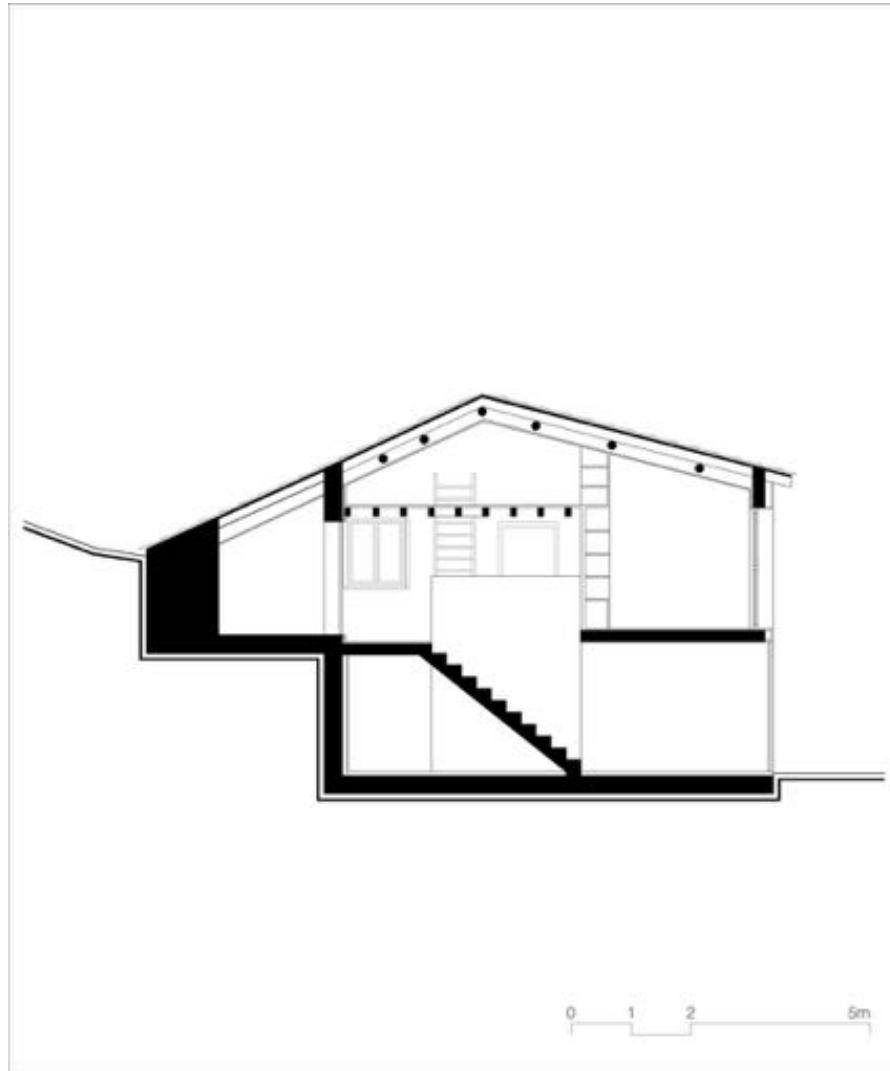
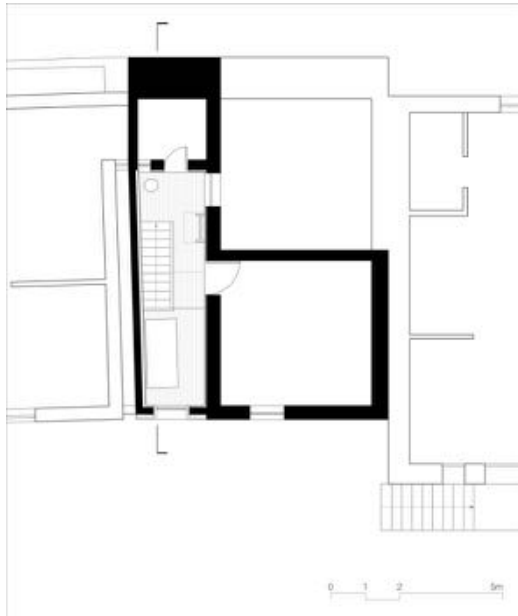
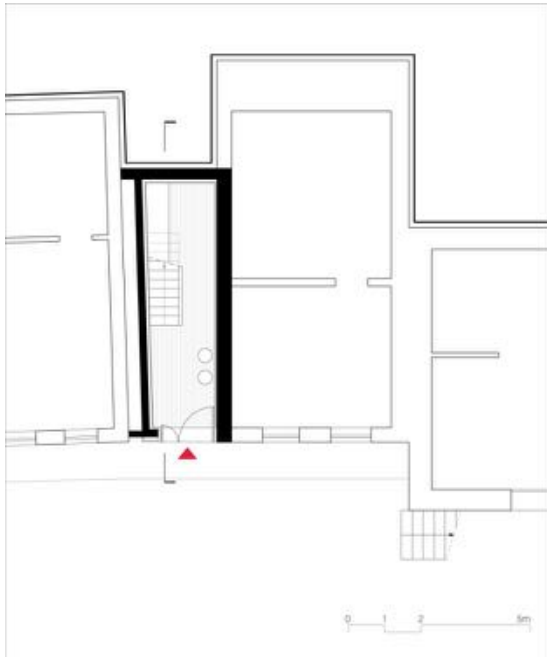


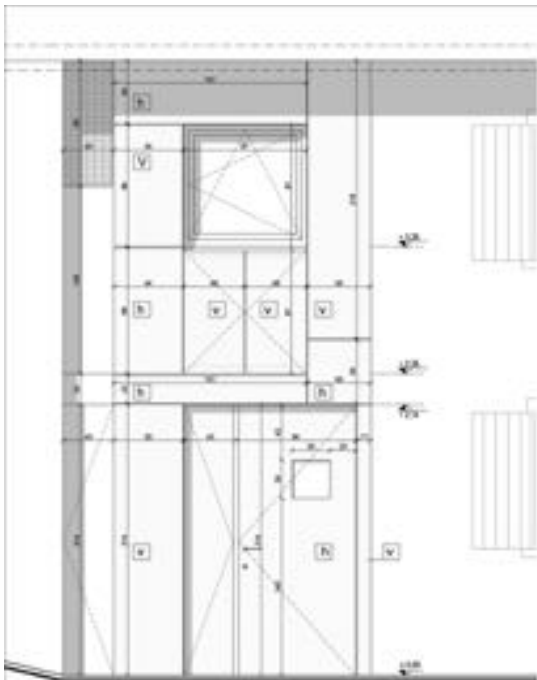
piano primo



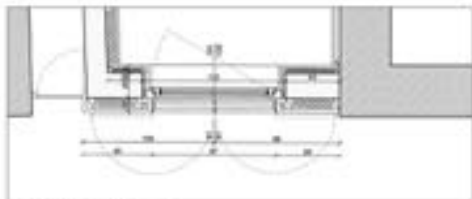
prospetto ovest



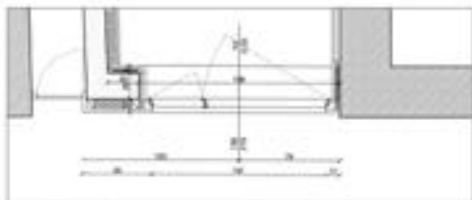




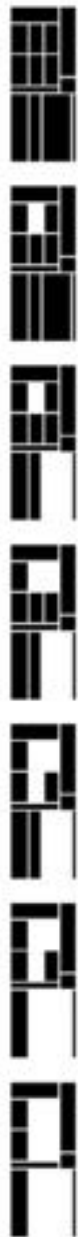
particolare facciata



particolare piano primo



particolare piano terra



























CASA FD
Madesimo (so)



planimetria stato di fatto

SDF



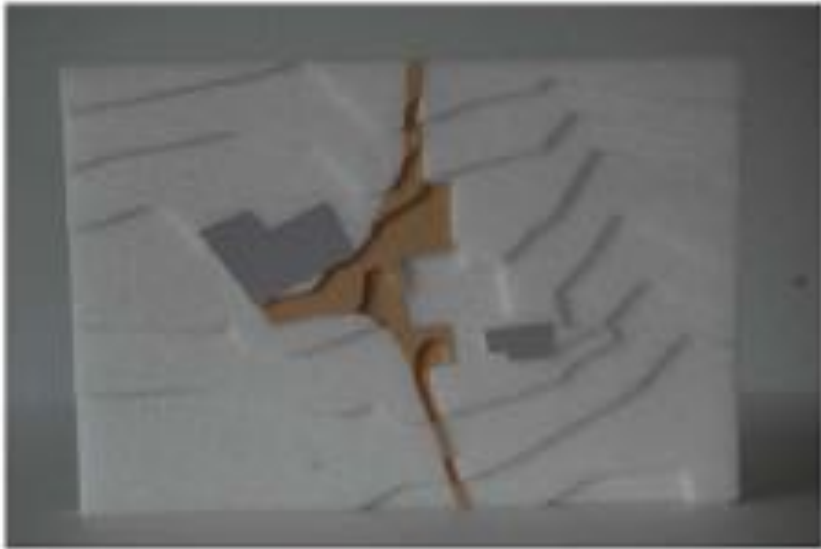
muro / edificio

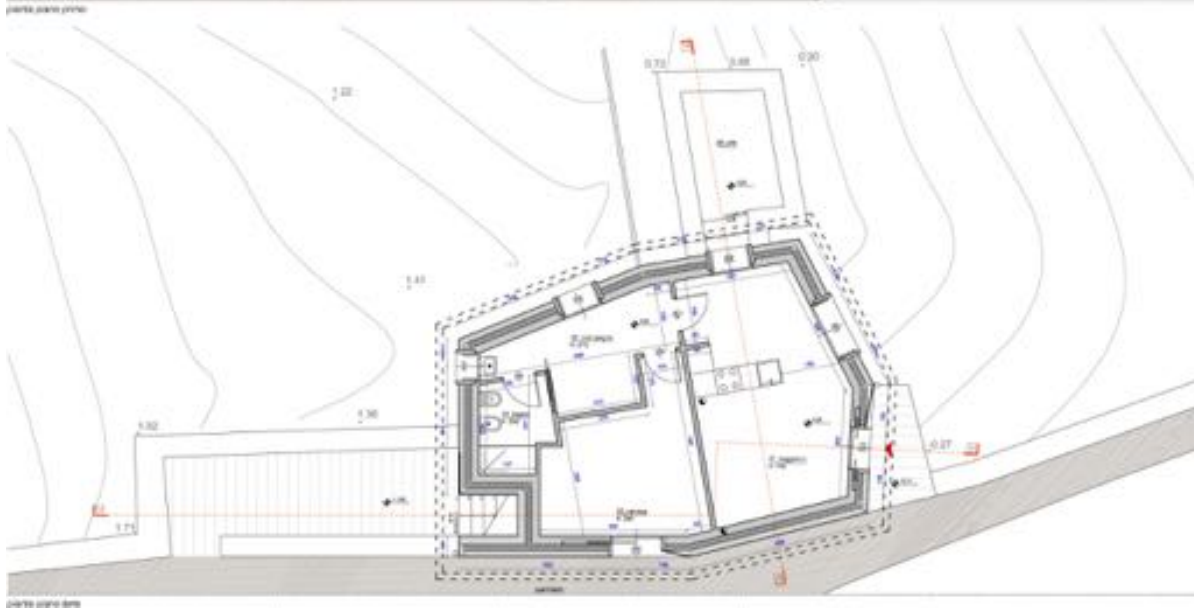
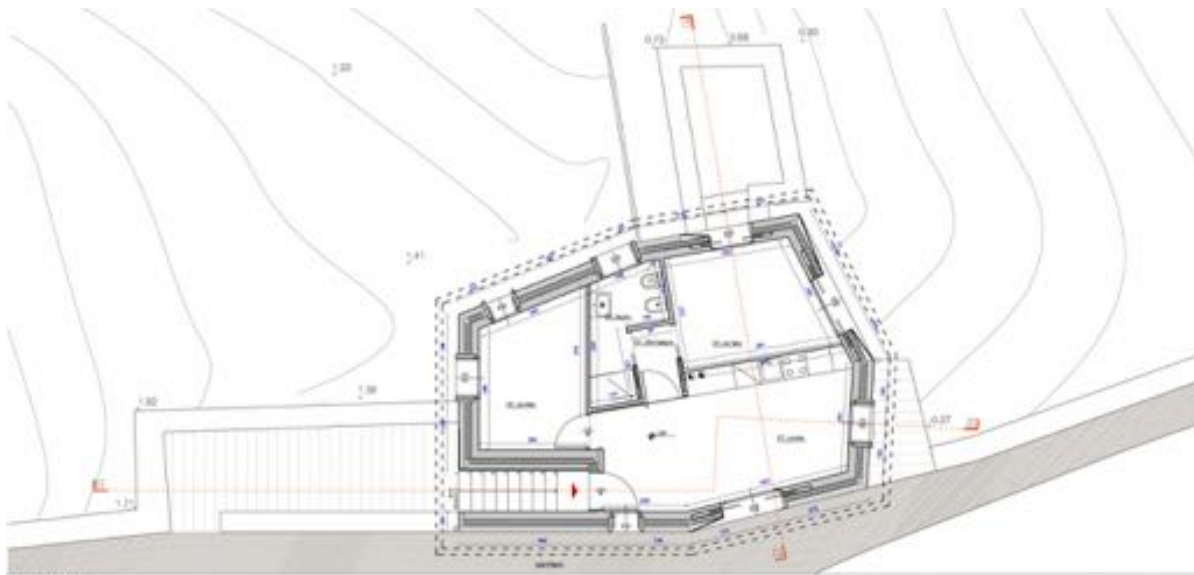


luogo / insediamento



vincoli spaziali



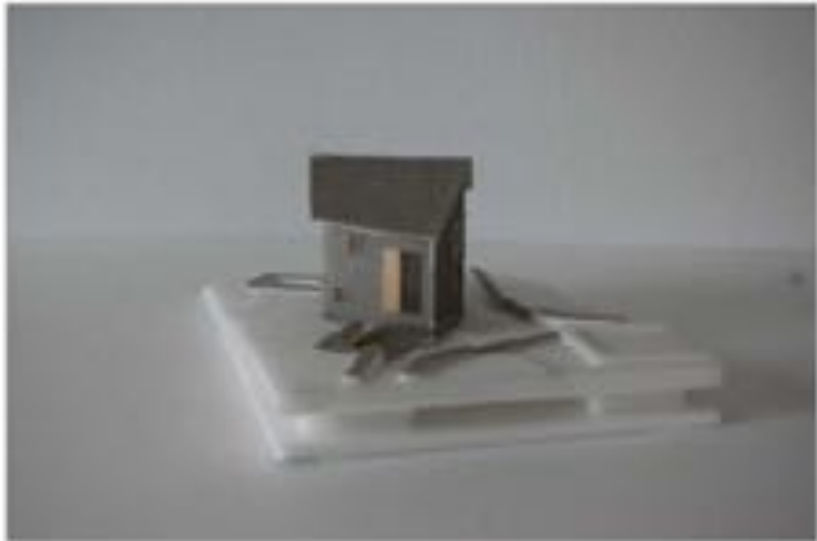


Piante



Prospetti















































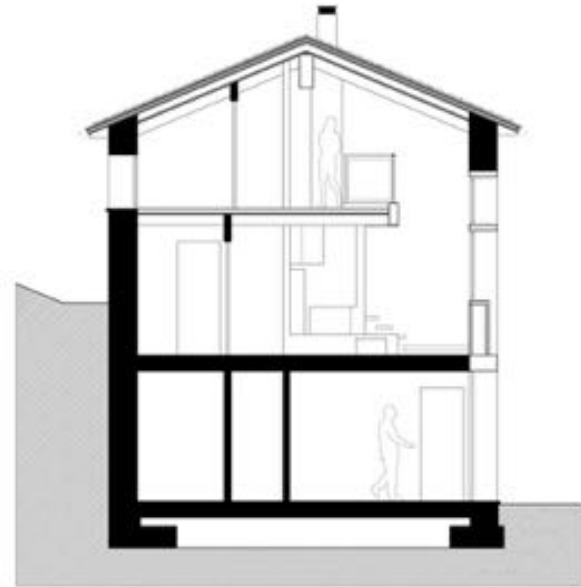


CONTESTO COSTRUITO

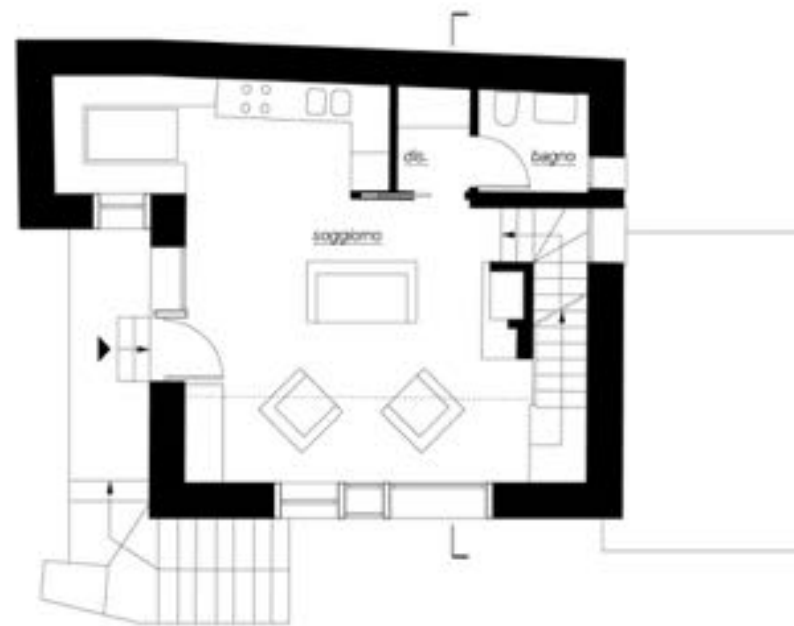
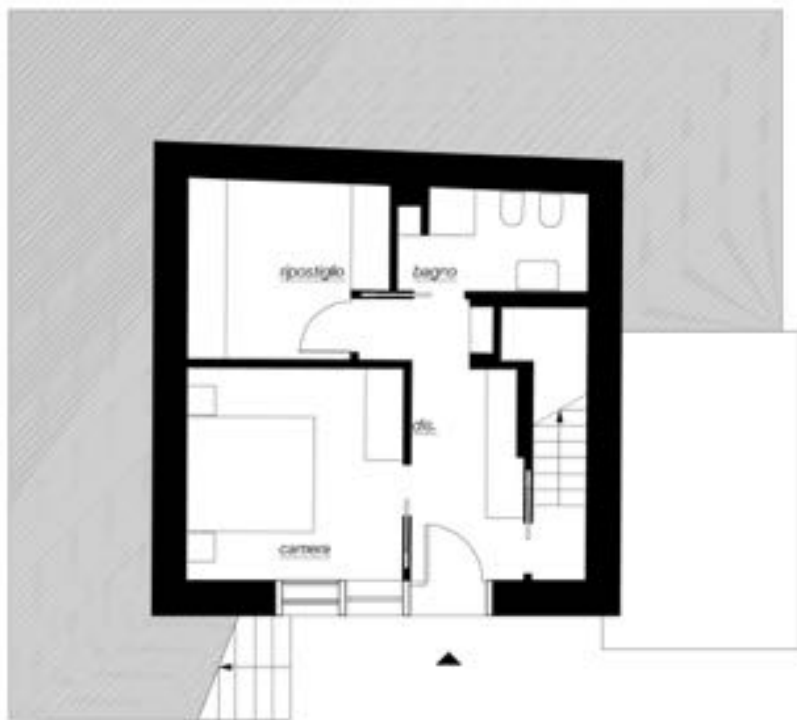
Casa UP_ evoluzione di una matrice



Casa UP_ matrice originale

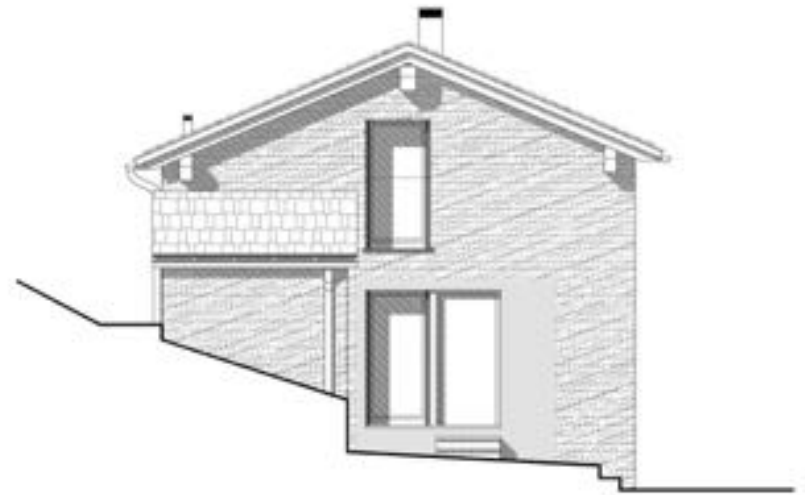
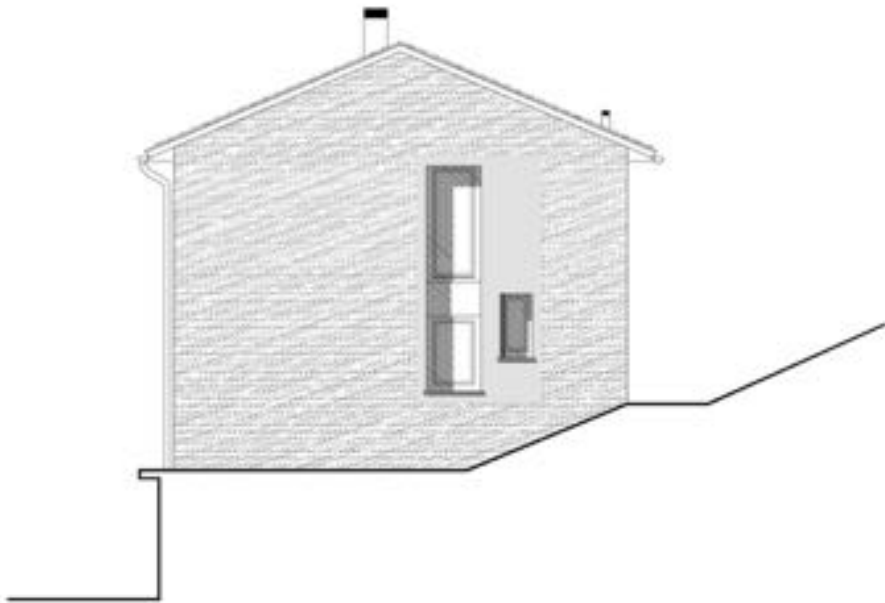


Casa UP_ scansione verticale



0





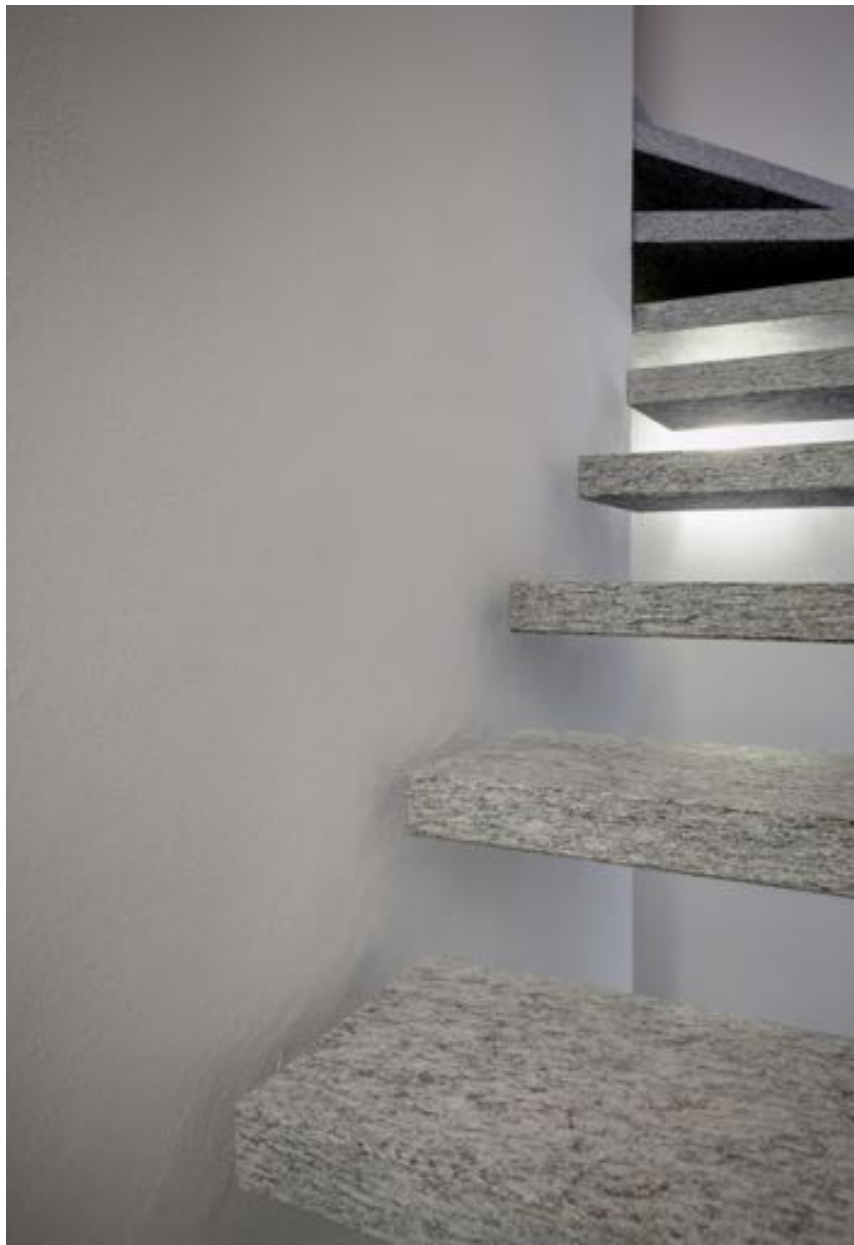






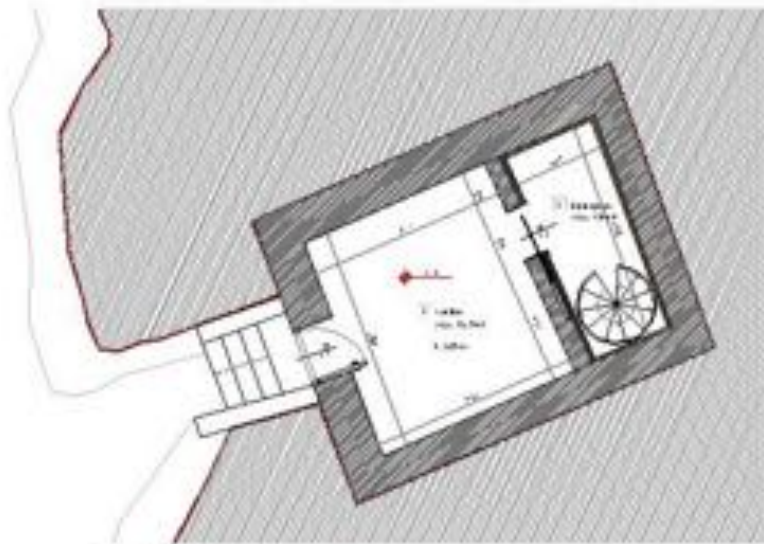




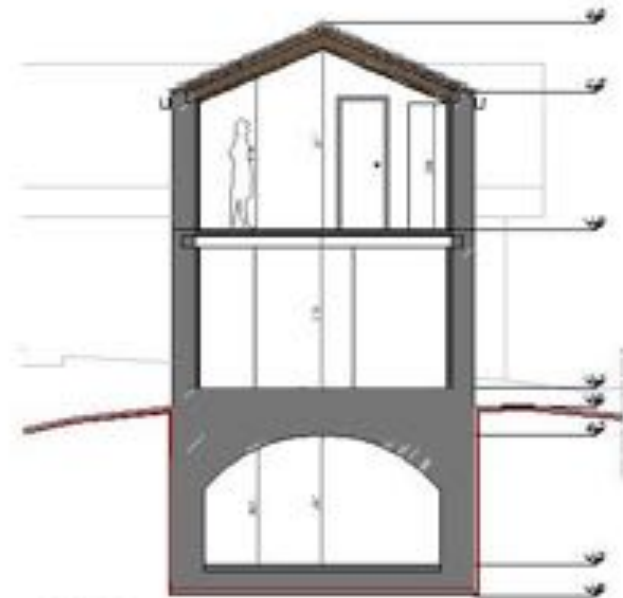




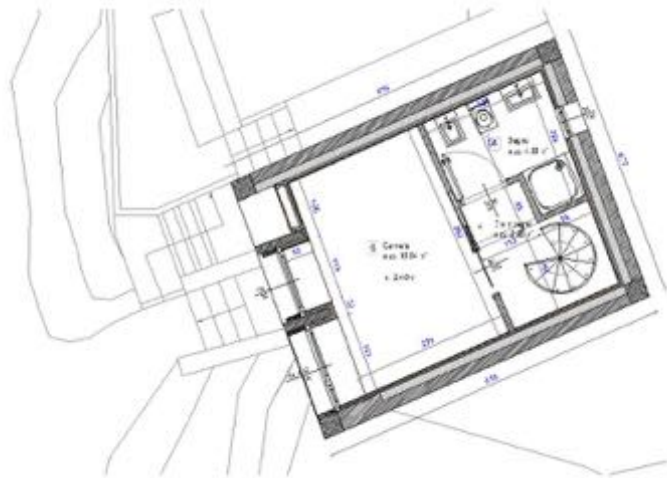
Casa Tb – Madesimo (so)



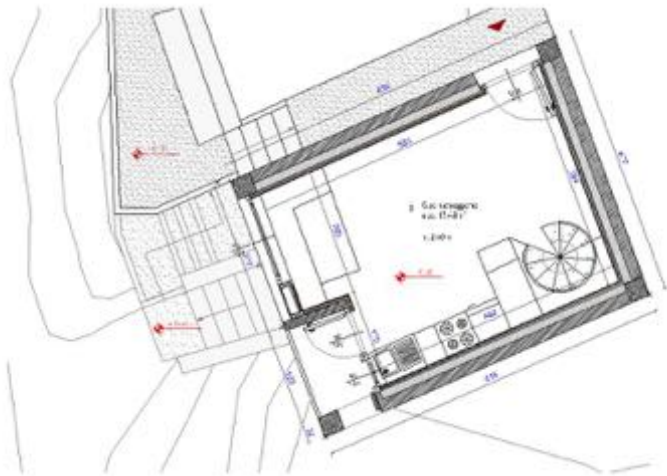
PIANO PRIMO INTERFATO



SEZIONE AN



PIANTA PIANO PRIMO



PIANTA PIANO SECONDO



PROSPETTO NORD



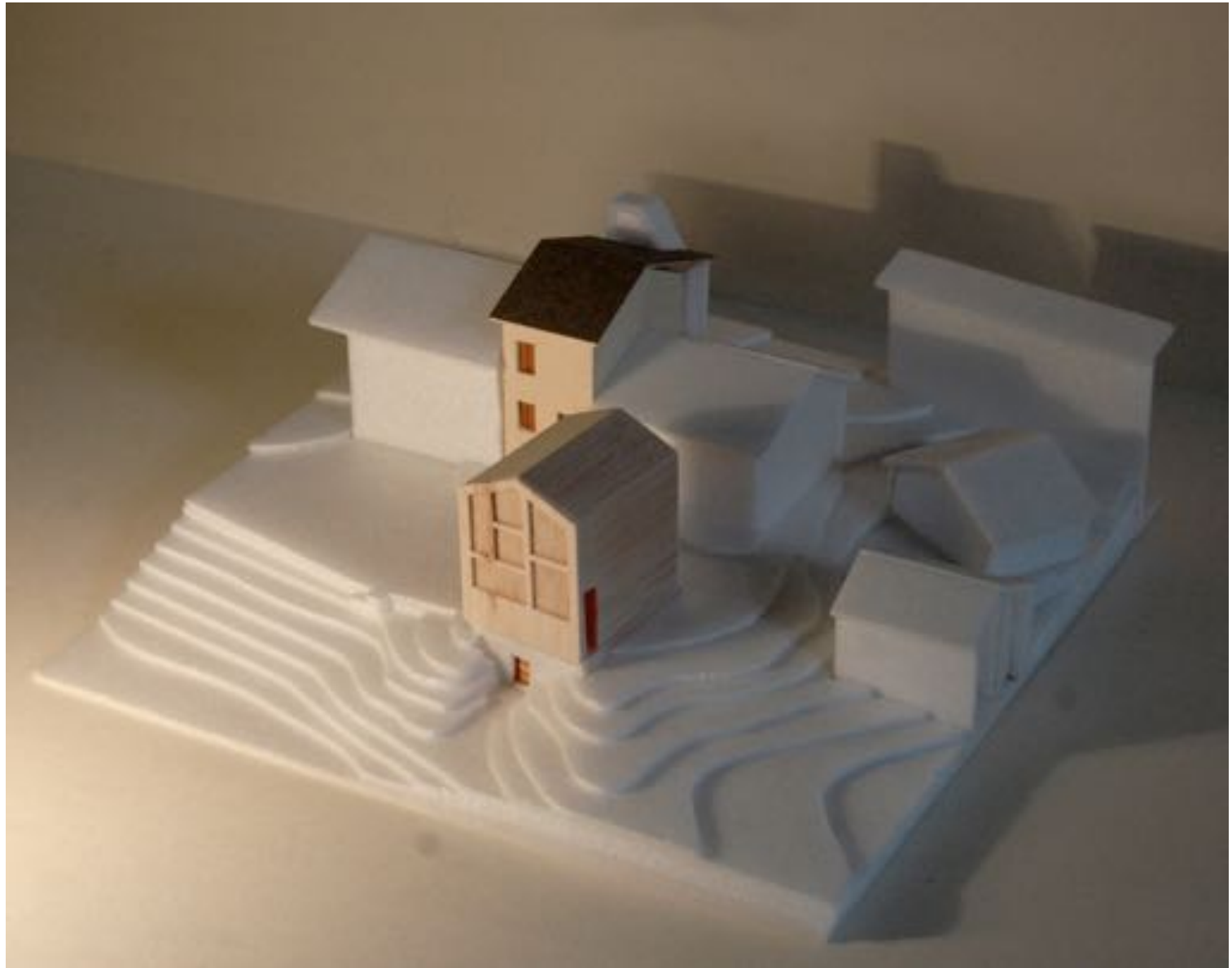
PROSPETTO SUD



PROSPETTO OVEST

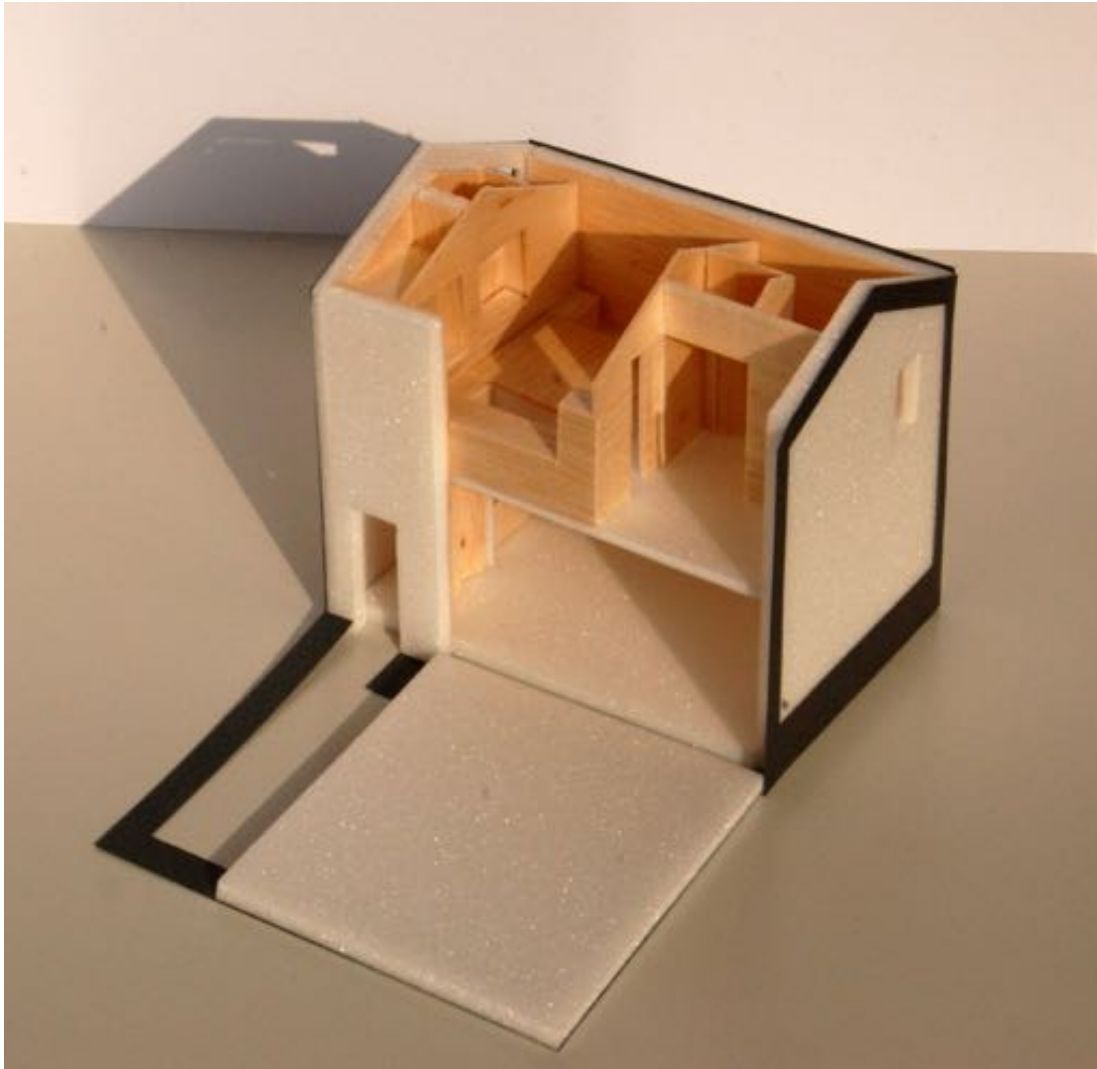


PROSPETTO EST















EDIFICIO_Casa VG_ architettura ibrida



EDIFICIO_Casa VG_ architettura ibrida



EDIFICIO_Casa VG_ architettura ibrida



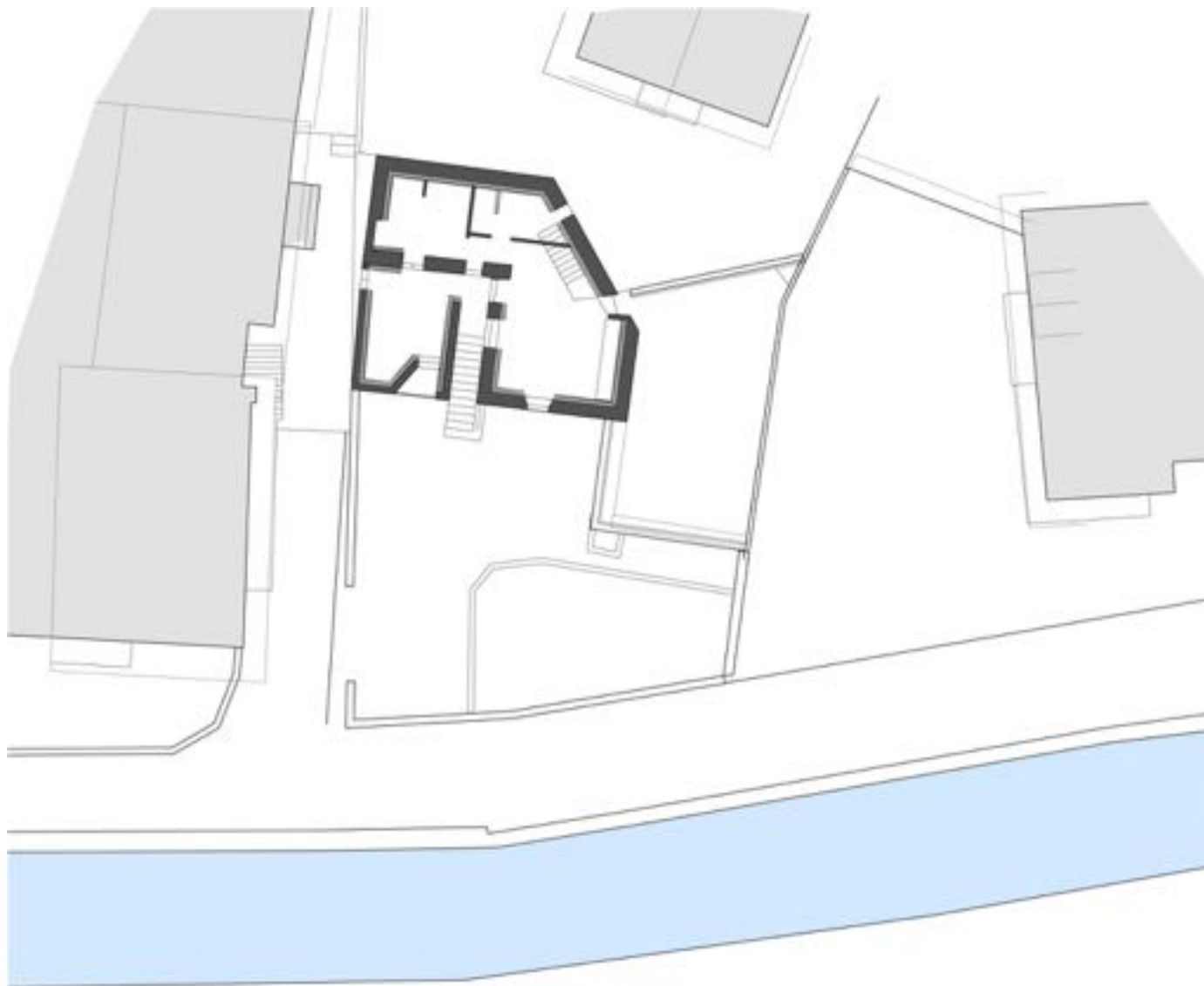
EDIFICIO_Casa VG_ architettura ibrida

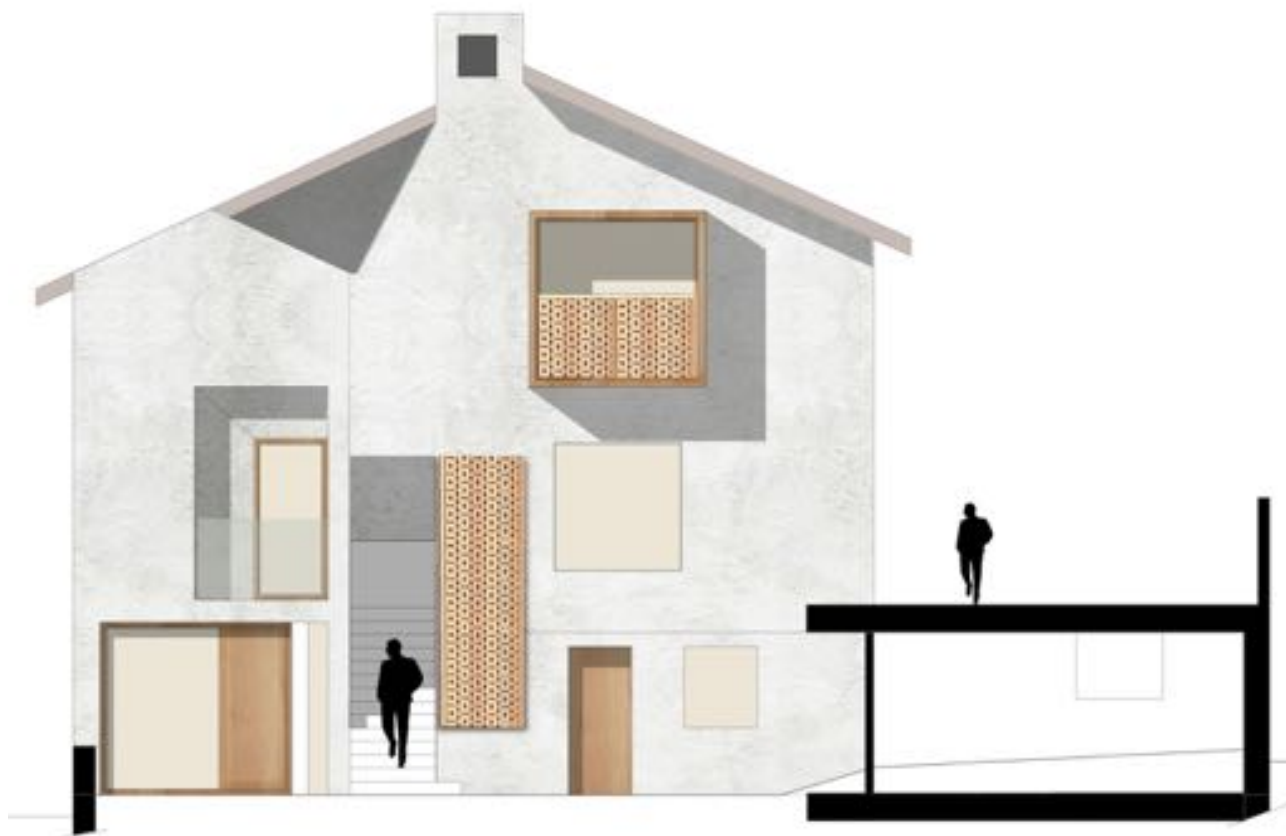


EDIFICIO_Casa VG_ architettura ibrida



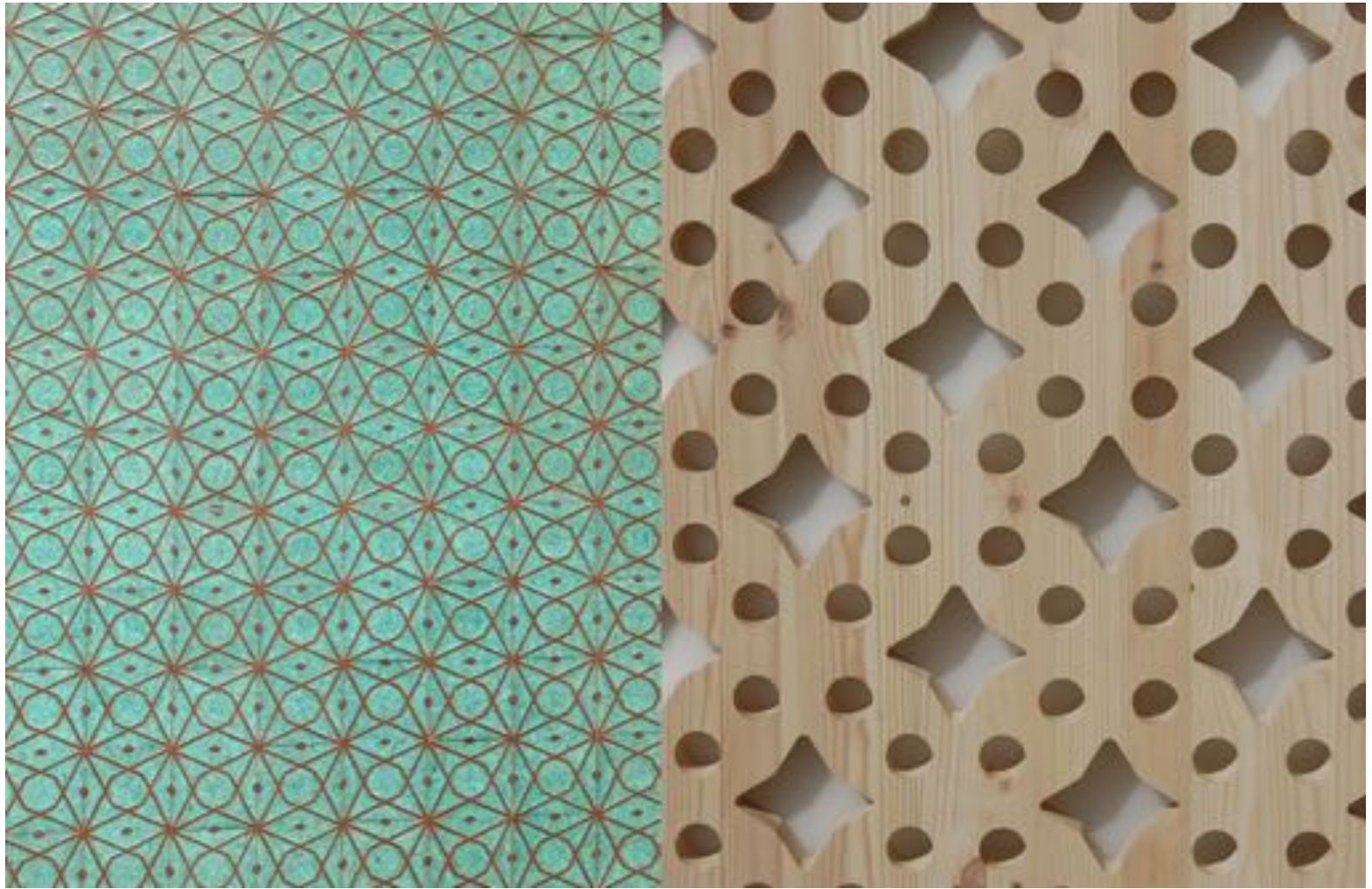
EDIFICIO_Casa VG_ architettura ibrida















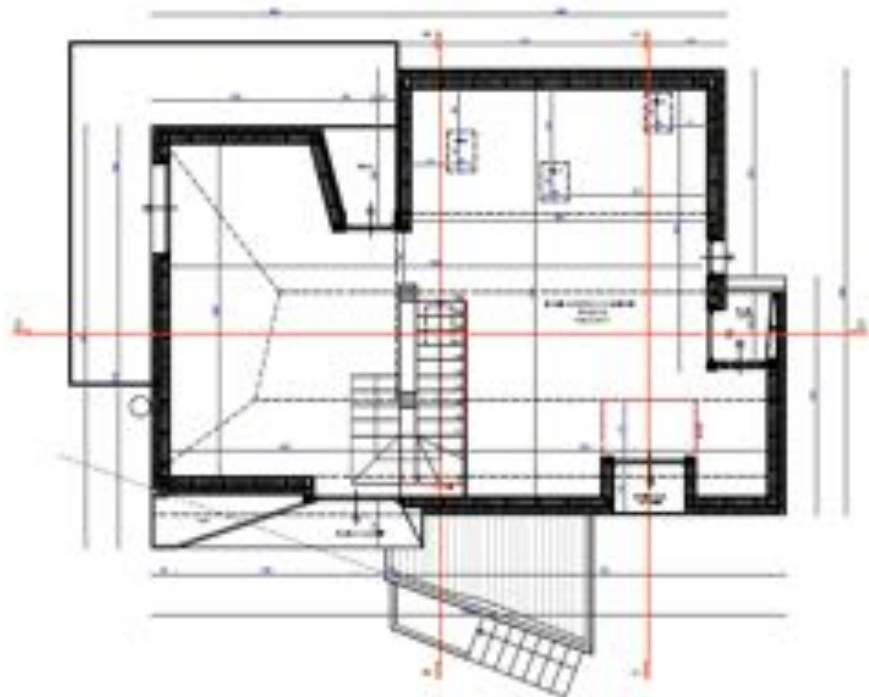
Casa EG
Villasanta (MB)







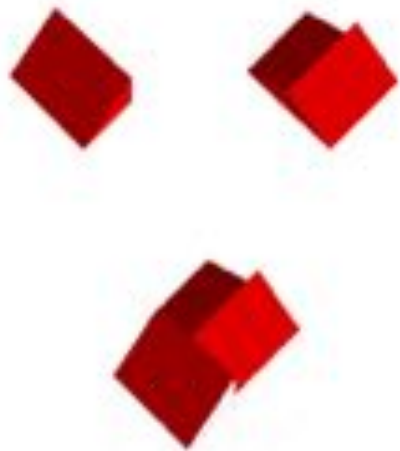




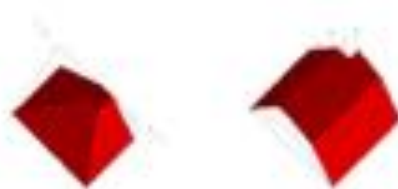
primo piano esterno



secondo piano interno



analisi di base



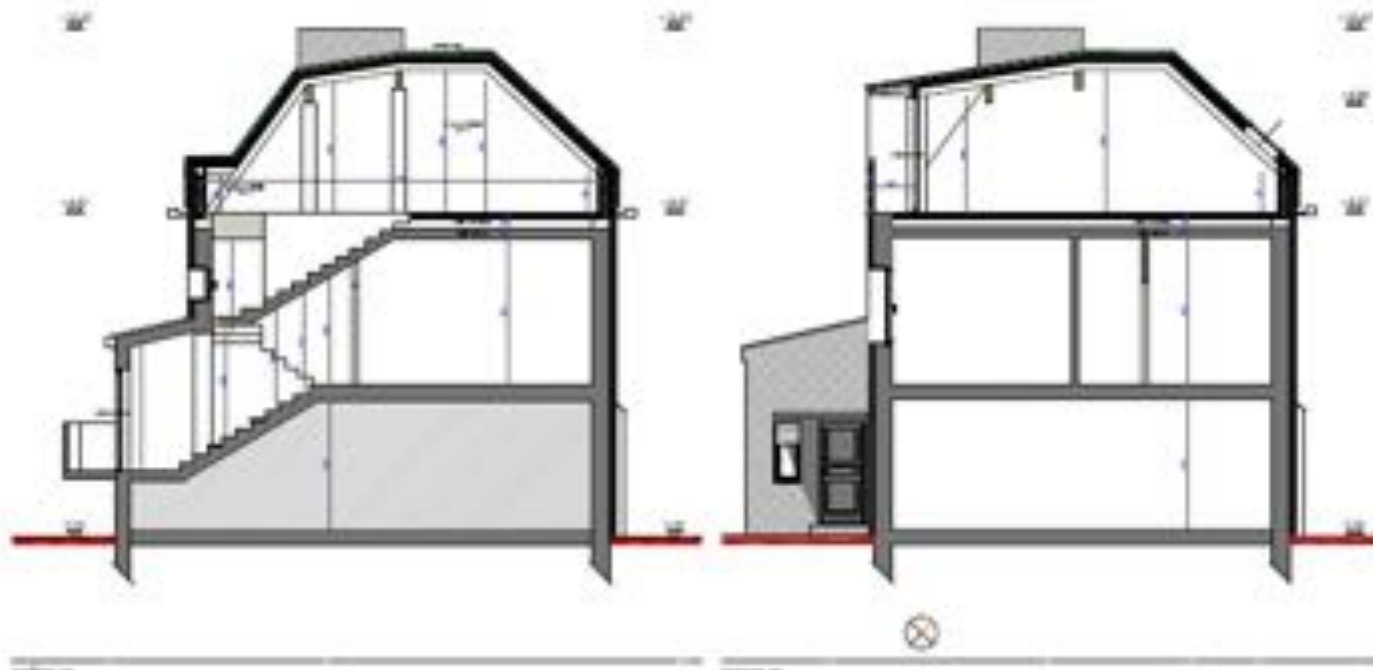
configurazione volumetrica

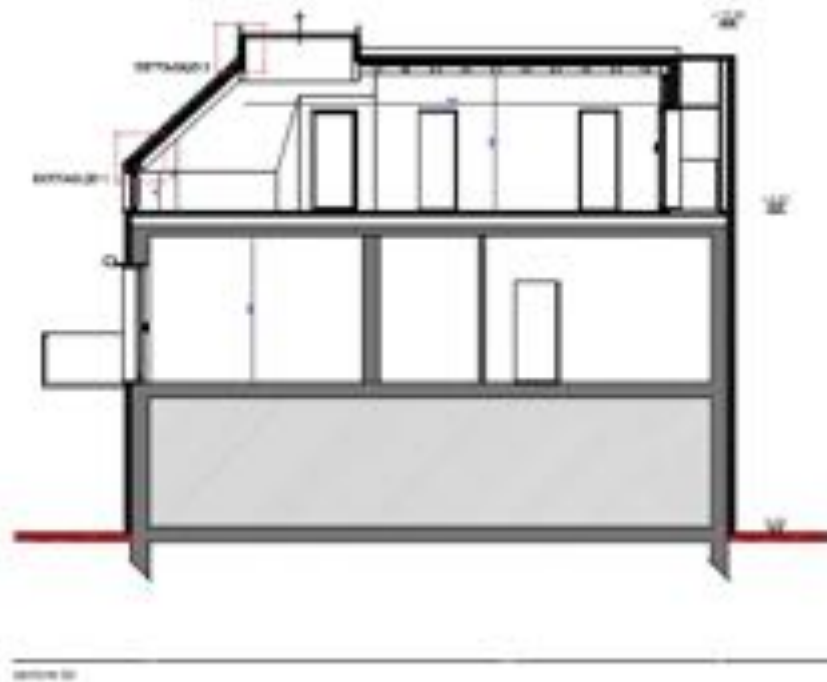


elementi di completamento

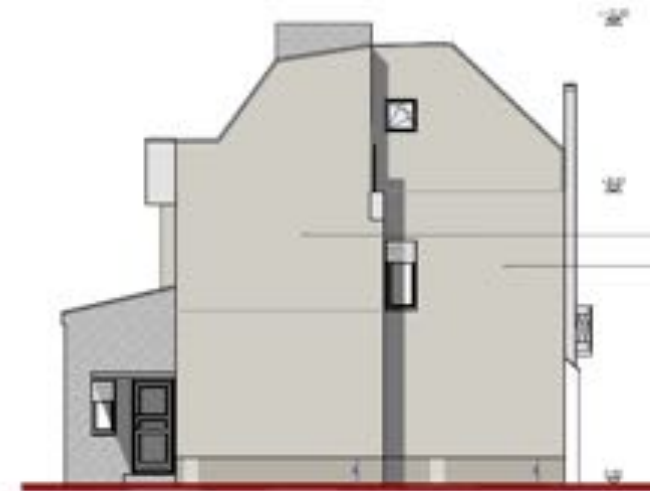


modello di progetto





Casa EG
Villasanta (MB)













Casa EG
Villasanta (MB)

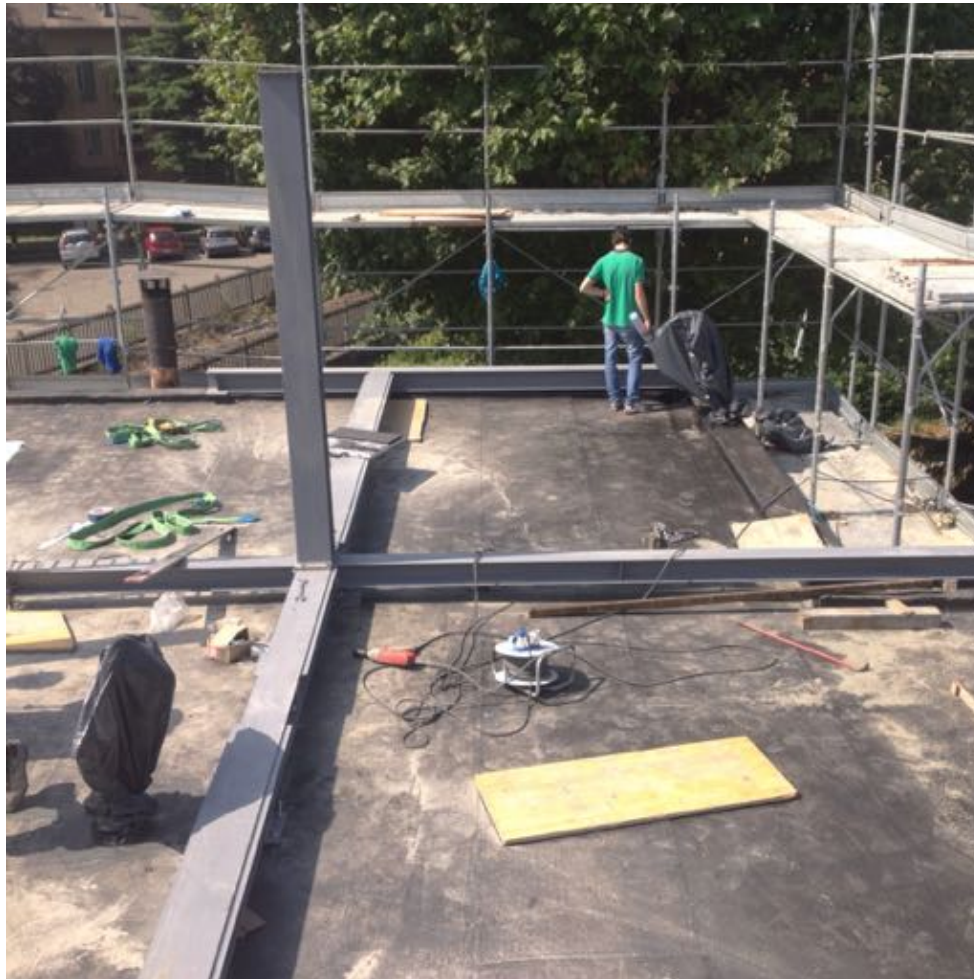












































































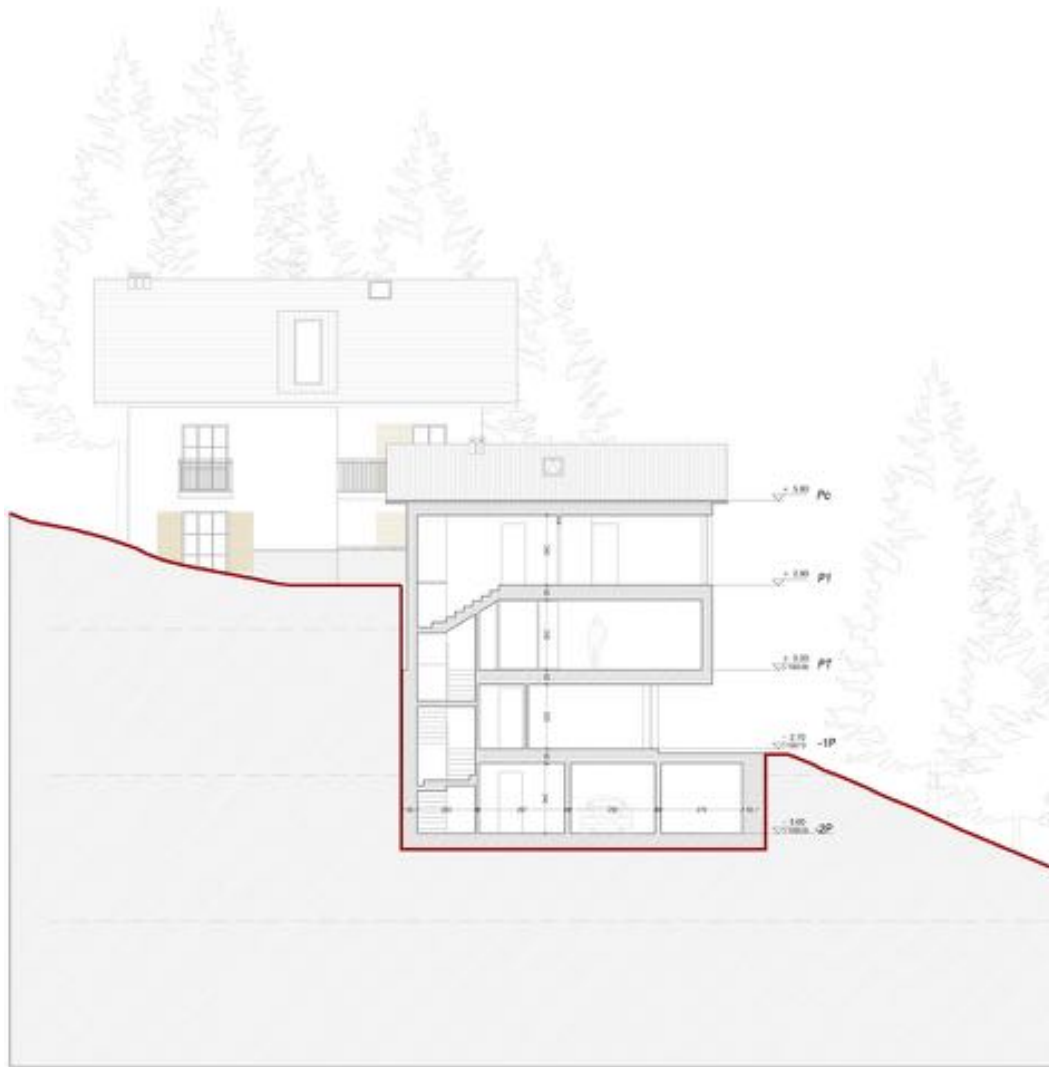
Casa FM
Madesimo (so)



Casa FM
Madesimo (so)



Casa FM
Madesimo (so)





Casa FM
Madesimo (so)



Casa FM
Madesimo (so)

Casa FM
Madesimo (so)



Casa FM
Madesimo (so)



Casa FM
Madesimo (so)



Casa FM
Madesimo (so)



Casa FM
Madesimo (so)



Casa FM
Madesimo (so)



Casa FM
Madesimo (so)



Casa FM
Madesimo (so)





Casa FM
Madesimo (so)



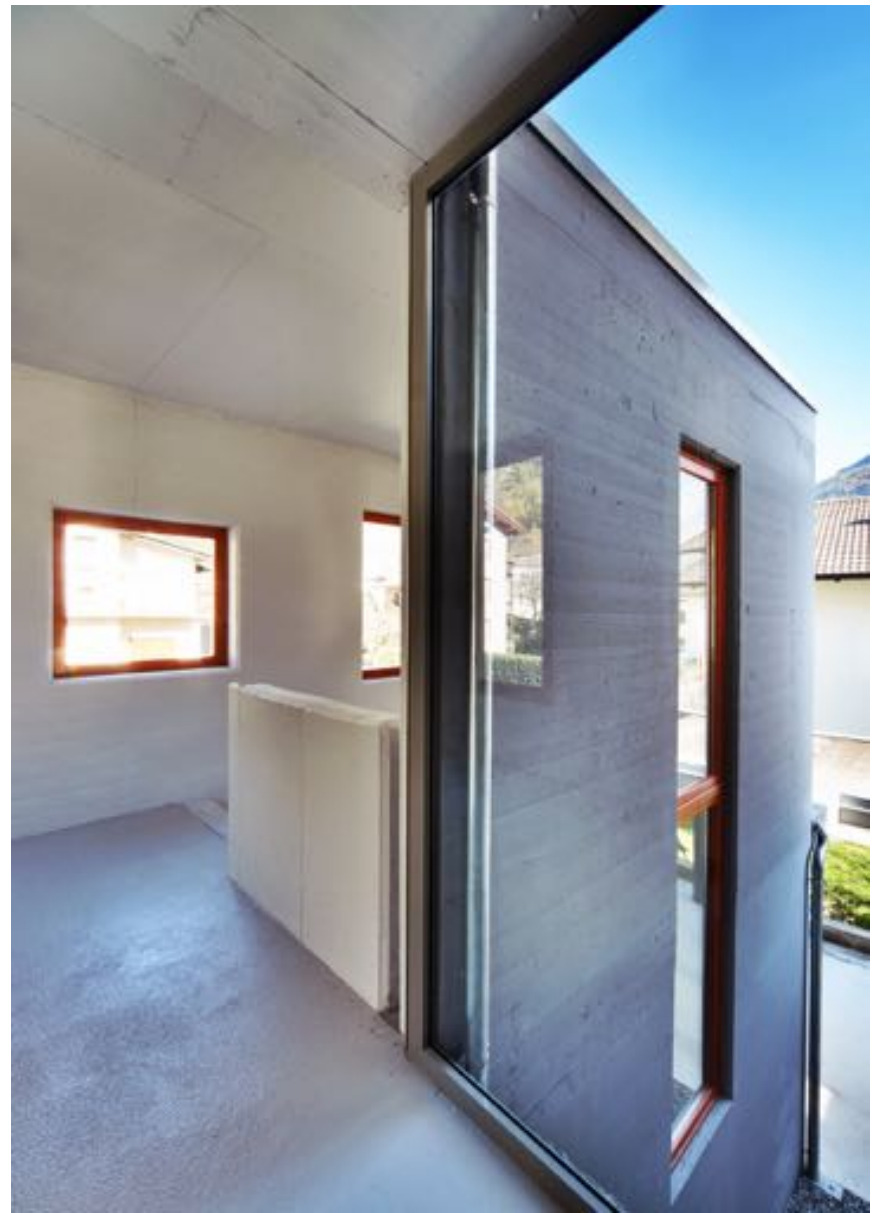


Museo del Latte: domestiche visioni e candore nordico

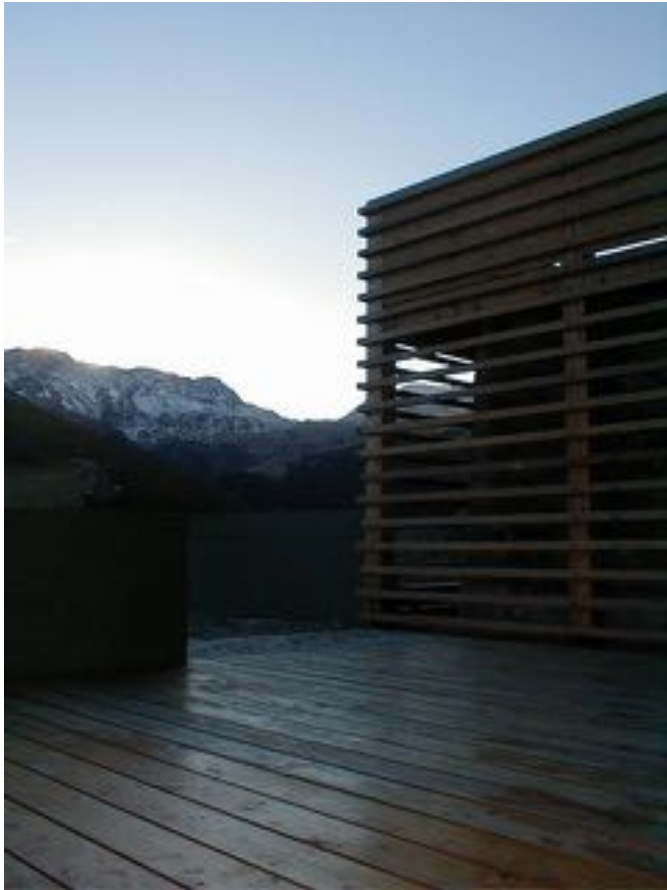












SPAZIO APERTO_

Area di sosta _ Giardino/Belvedere Acque Rosse S.S. 36 (so)



Area di sosta_ Giardino/Belvedere Acque Rosse – Madesimo (so)





MANUFATTI
ESISTENTI



MASSI
ERRATICI



MANUFATTI DI
PROGETTO



SCARPATE
INCLINATE



synthesis

PERCORSI



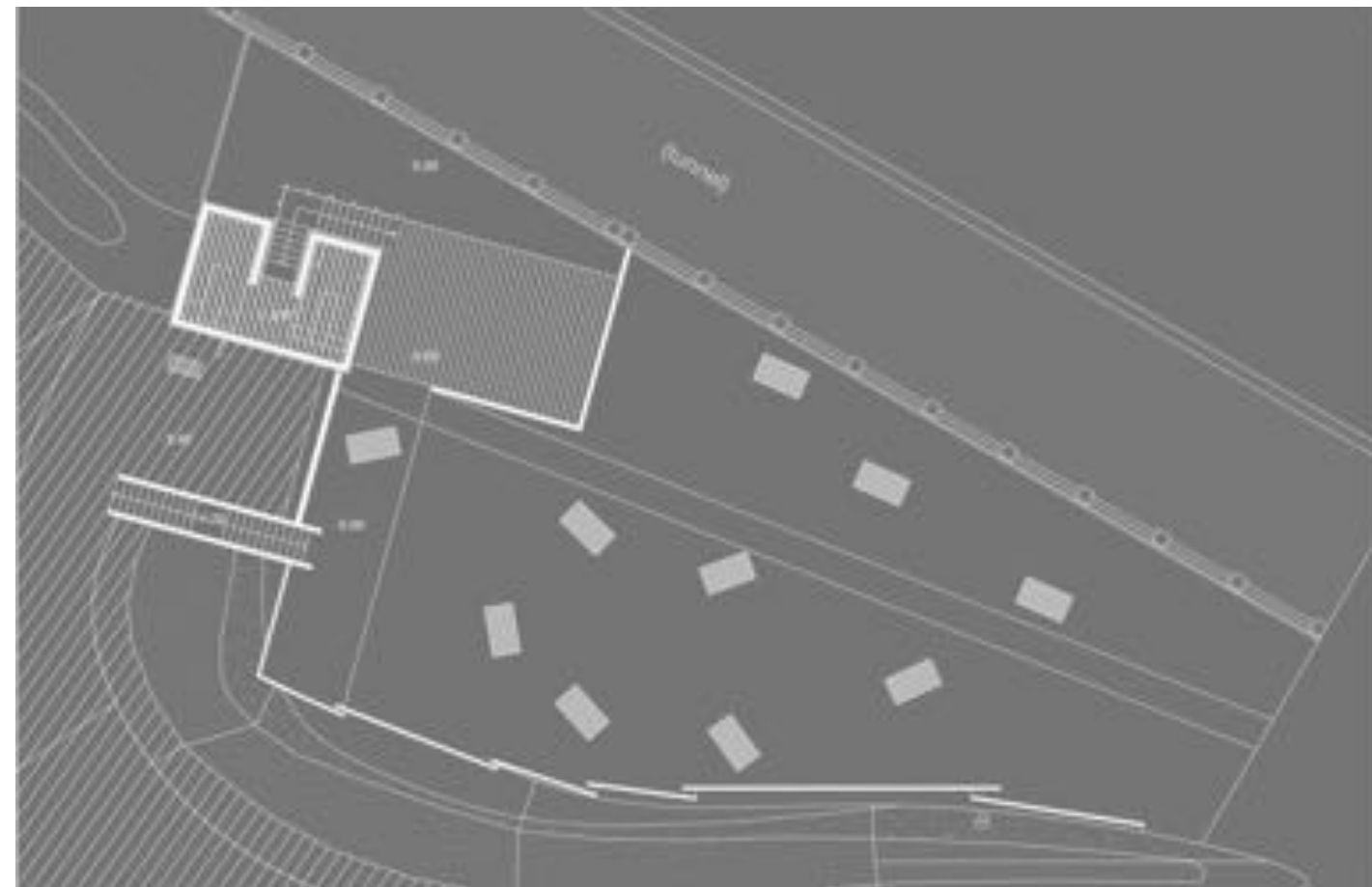
DELIMITAZIONI



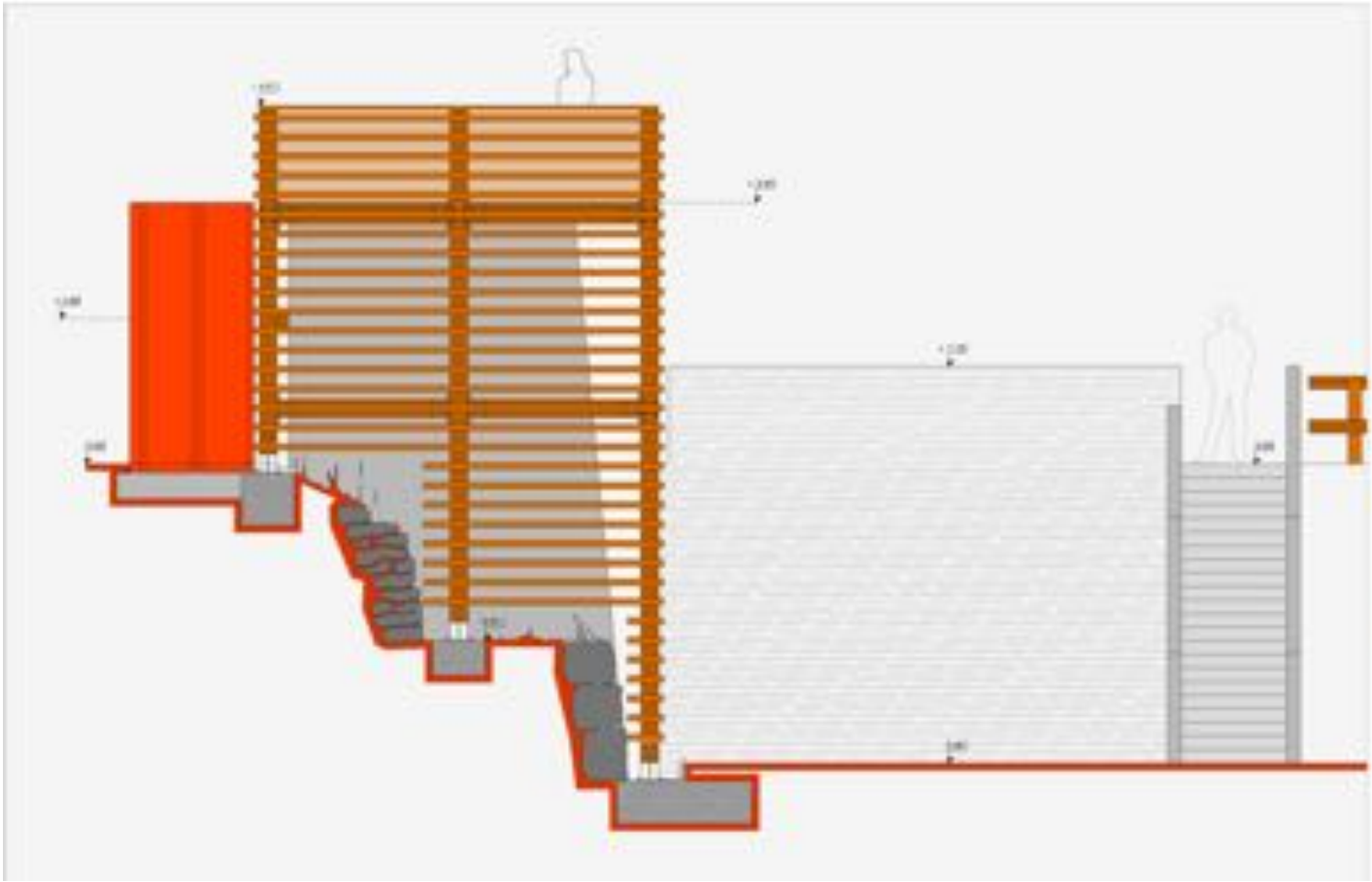
"PRATO" DI GHIAIA

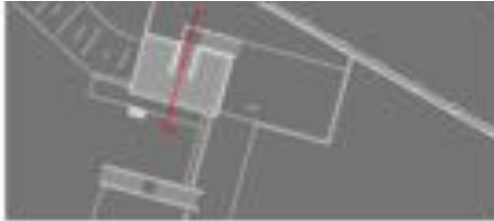
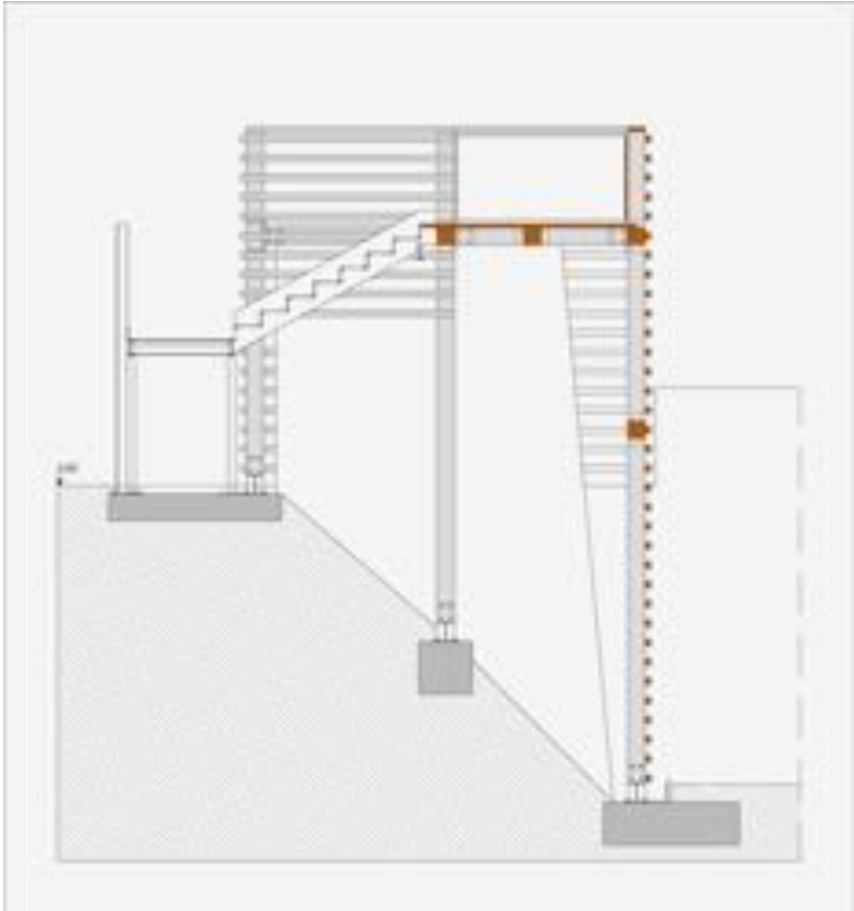


synthesis

































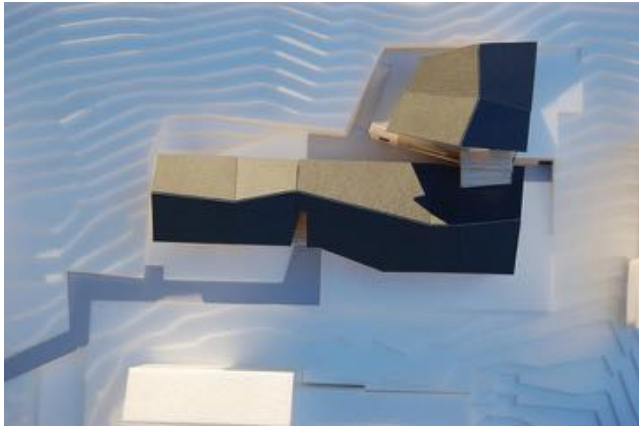




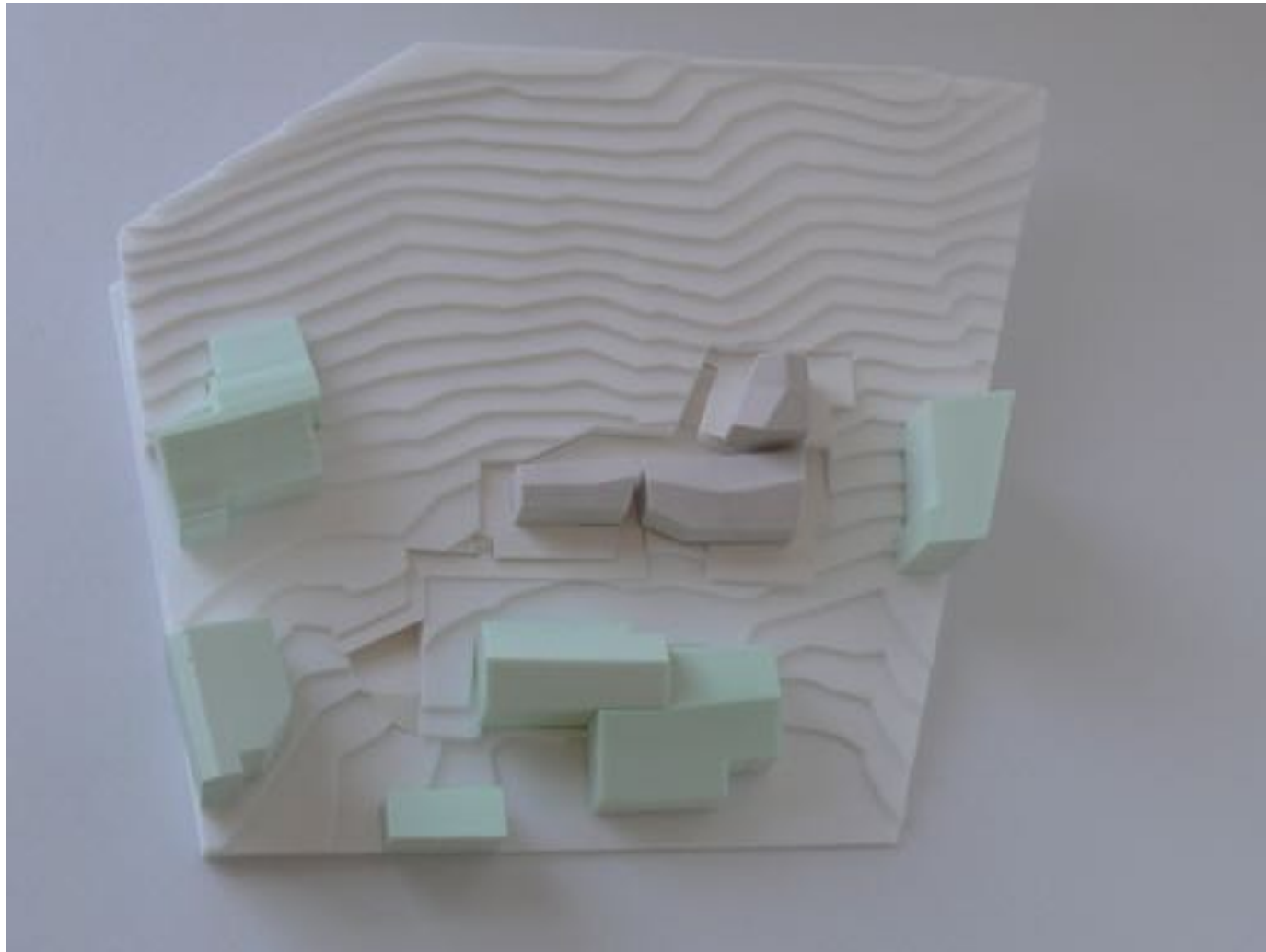


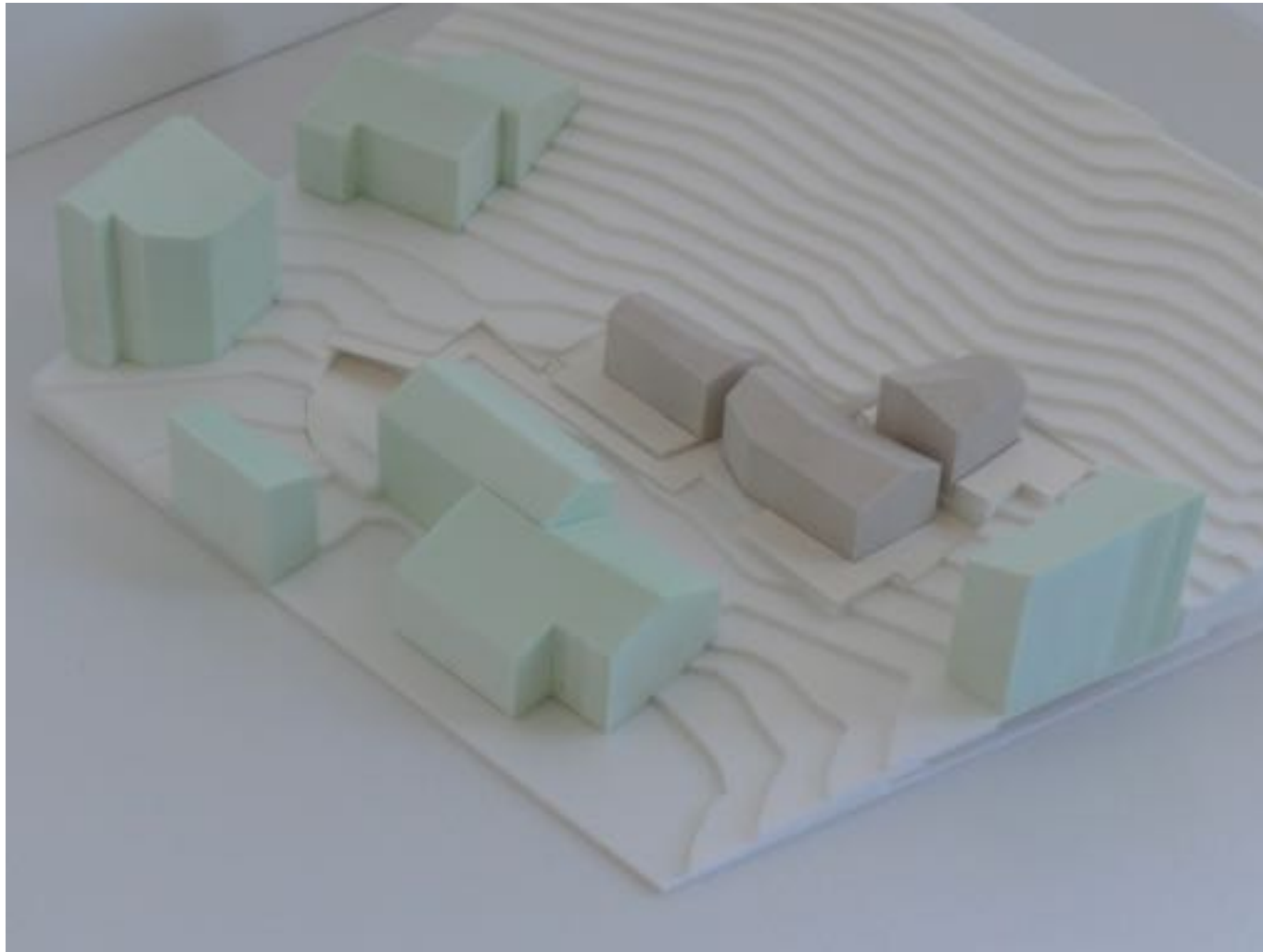


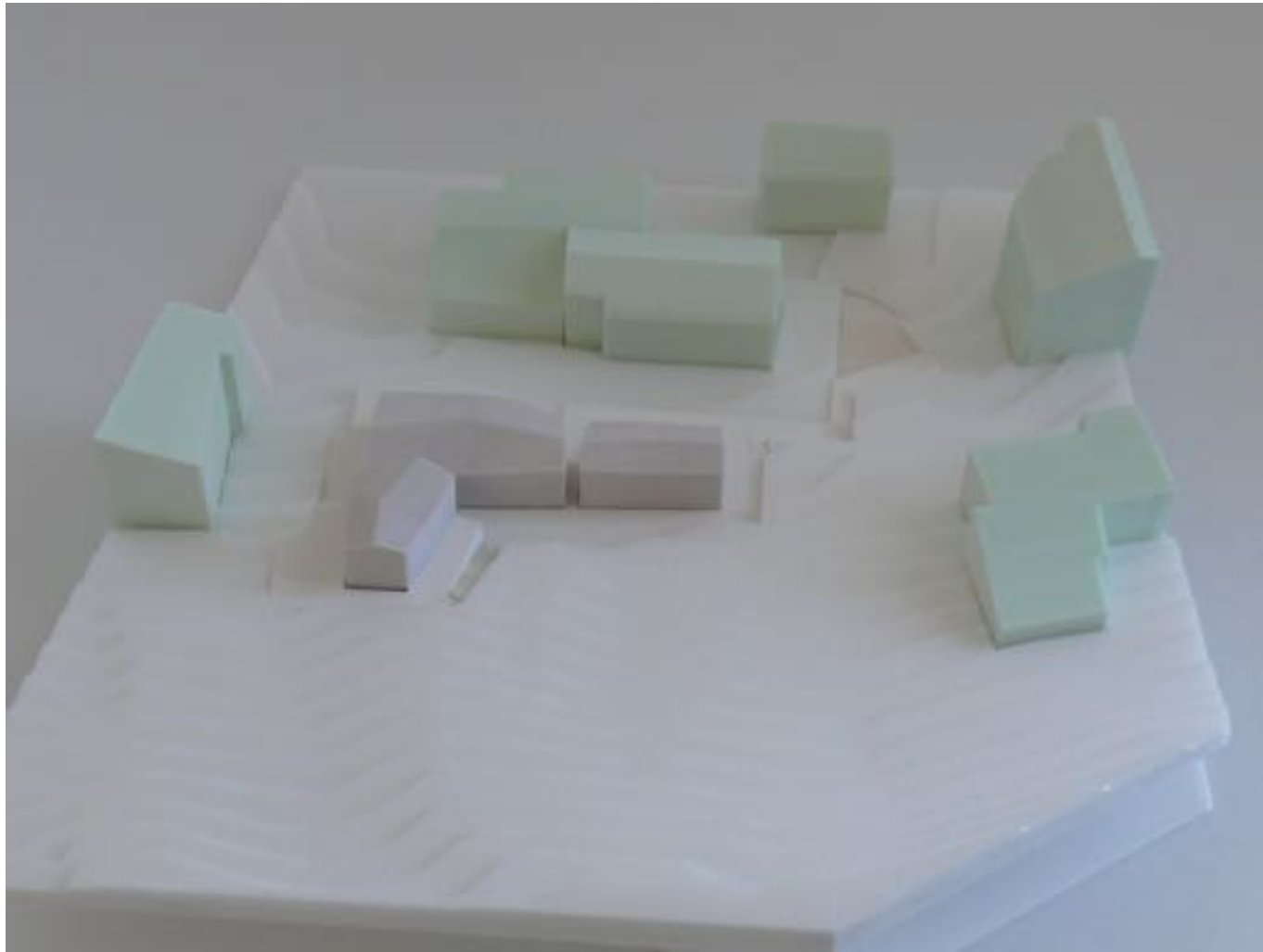




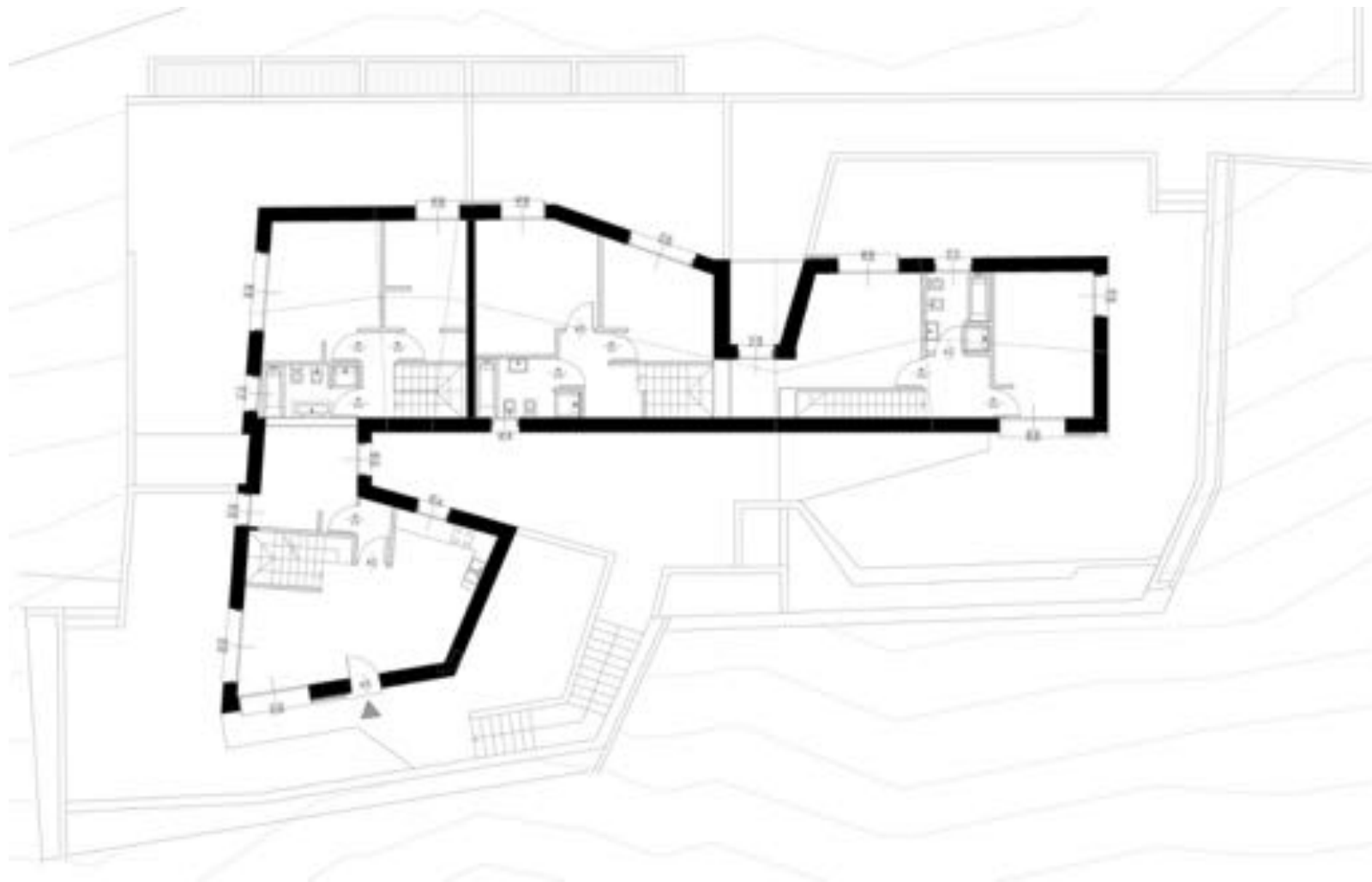
Complesso ski home
Madesimo (so)

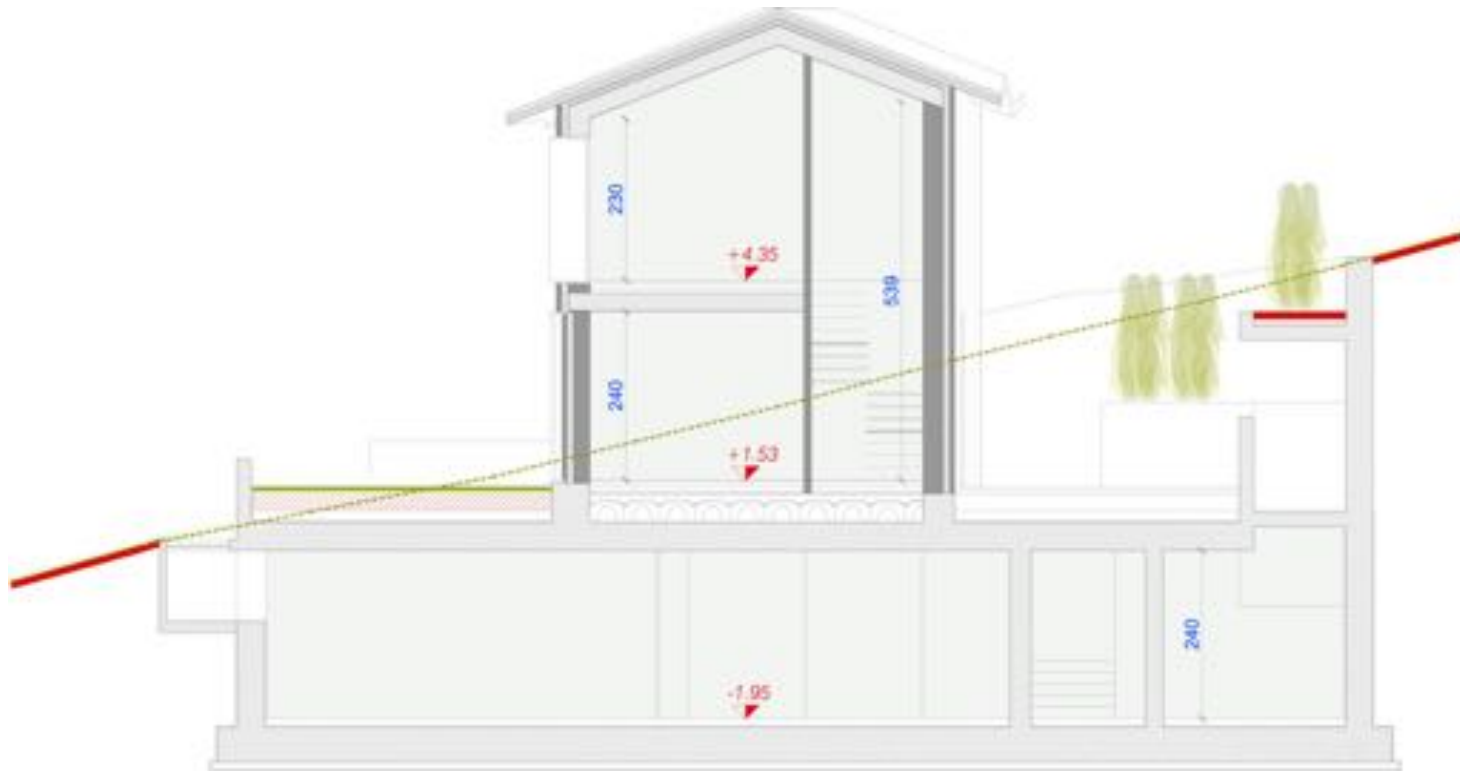












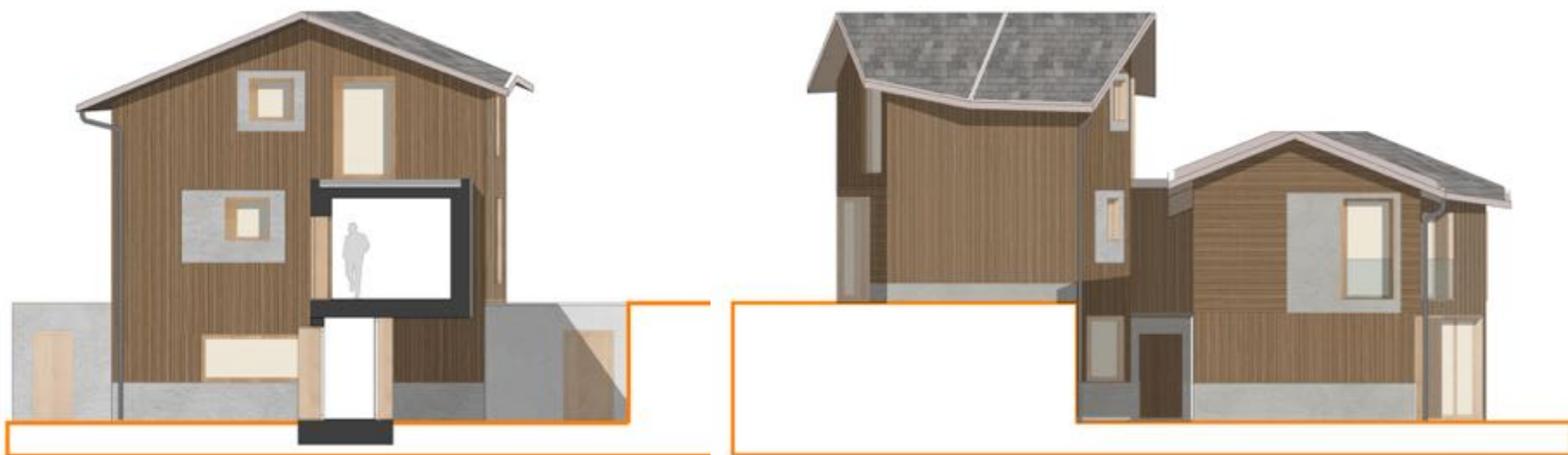
























































Residenza AG3
Milano



























































" ..L'intensità e la piccola scala costituiscono veramente un terreno molto fertile per un progetto di architettura. Quindi la pazienza e l'umiltà di guardare a questa piccola scala, sono assolutamente i due più preziosi consigli che io possa dare" - Steven Holl